


# Clinical, morphological and genetic characterization of Brody disease: an international study of 40 patients

Joery P. Molenaar,<sup>1</sup> Jamie I. Verhoeven,<sup>1</sup> Richard J. Rodenburg,<sup>2</sup> Erik J. Kamsteeg,<sup>3</sup> Corrie E. Erasmus,<sup>1</sup> Savine Vicart,<sup>4</sup> Anthony Behin,<sup>4</sup> Guillaume Bassez,<sup>4</sup> Armelle Magot,<sup>5</sup> Yann Péréon,<sup>5</sup> Barbara W. Brandom,<sup>6</sup> Valeria Guglielmi,<sup>7</sup> Gaetano Vattemi,<sup>7</sup> Frédéric Chevessier,<sup>8</sup> Jean Mathieu,<sup>9</sup> Jérôme Franques,<sup>10</sup> Karen Suetterlin,<sup>11</sup> Michael G. Hanna,<sup>11</sup> Lucie Guyant-Marechal,<sup>12</sup> Marc M. Snoeck,<sup>13</sup> Mark E. Roberts,<sup>14</sup> Thierry Kuntzer,<sup>15</sup> Roberto Fernandez-Torron,<sup>16</sup> Amaia Martínez-Arroyo,<sup>17</sup> Juergen Seeger,<sup>18</sup> Benno Kusters,<sup>19</sup>  Susan Treves,<sup>20,21</sup> Baziël G. van Engelen,<sup>1</sup> Bruno Eymard,<sup>4</sup> Nicol C. Voermans<sup>1,\*</sup> and Damien Sternberg<sup>4,\*</sup>

\*These authors contributed equally to this work.

Brody disease is an autosomal recessive myopathy characterized by exercise-induced muscle stiffness due to mutations in the *ATP2A1* gene. Almost 50 years after the initial case presentation, only 18 patients have been reported and many questions regarding the clinical phenotype and results of ancillary investigations remain unanswered, likely leading to incomplete recognition and consequently under-diagnosis. Additionally, little is known about the natural history of the disorder, genotype-phenotype correlations, and the effects of symptomatic treatment. We studied the largest cohort of Brody disease patients to date ( $n = 40$ ), consisting of 22 new patients (19 novel mutations) and all 18 previously published patients. This observational study shows that the main feature of Brody disease is an exercise-induced muscle stiffness of the limbs, and often of the eyelids. Onset begins in childhood and there was no or only mild progression of symptoms over time. Four patients had episodes resembling malignant hyperthermia. The key finding at physical examination was delayed relaxation after repetitive contractions. Additionally, no atrophy was seen, muscle strength was generally preserved, and some patients had a remarkable athletic build. Symptomatic treatment was mostly ineffective or produced unacceptable side effects. EMG showed silent contractures in approximately half of the patients and no myotonia. Creatine kinase was normal or mildly elevated, and muscle biopsy showed mild myopathic changes with selective type II atrophy. Sarcoplasmic/endoplasmic reticulum  $\text{Ca}^{2+}$  ATPase (SERCA) activity was reduced and western blot analysis showed decreased or absent SERCA1 protein. Based on this cohort, we conclude that Brody disease should be considered in cases of exercise-induced muscle stiffness. When physical examination shows delayed relaxation, and there are no myotonic discharges at electromyography, we recommend direct sequencing of the *ATP2A1* gene or next generation sequencing with a myopathy panel. Aside from clinical features, SERCA activity measurement and SERCA1 western blot can assist in proving the pathogenicity of novel *ATP2A1* mutations. Finally, patients with Brody disease may be at risk for malignant hyperthermia-like episodes, and therefore appropriate perioperative measures are recommended. This study will help improve understanding and recognition of Brody disease as a distinct myopathy in the broader field of calcium-related myopathies.

Received August 20, 2019. Revised October 30, 2019. Accepted November 16, 2019

© The Author(s) (2020). Published by Oxford University Press on behalf of the Guarantors of Brain.

This is an Open Access article distributed under the terms of the Creative Commons Attribution Non-Commercial License (<http://creativecommons.org/licenses/by-nc/4.0/>), which permits non-commercial re-use, distribution, and reproduction in any medium, provided the original work is properly cited. For commercial re-use, please contact [journals.permissions@oup.com](mailto:journals.permissions@oup.com)

- 1 Department of Neurology, Donders Centre for Medical Neuroscience, Radboud University Medical Centre, Nijmegen, The Netherlands
- 2 Department of Pediatrics, Translational Metabolic Laboratory, Radboud Center for Mitochondrial Medicine, Radboud University Medical Centre, Nijmegen, The Netherlands
- 3 Department of Human Genetics, Radboud University Medical Center, Nijmegen, The Netherlands
- 4 Assistance Publique-Hôpitaux de Paris, Centre de Référence des Canalopathies Musculaires, Centre de Référence des Maladies Neuromusculaires-Paris Est et Service de Génétique, Groupe Hospitalier Pitié-Salpêtrière, Paris, France
- 5 CHU Nantes, Centre de Référence Maladies Neuromusculaires AOC, Nantes, France
- 6 Department of Anesthesiology, Children's Hospital, University of Pittsburgh, Pittsburgh, Pennsylvania, USA
- 7 Department of Neurosciences, Biomedicine and Movement Sciences, Section of Clinical Neurology, University of Verona, Verona, Italy
- 8 CureVac AG, Tübingen, Germany
- 9 Neuromuscular Clinic, Centre de Réadaptation en Déficience Physique de Jonquière, Jonquière, Québec, Canada
- 10 Centre de référence des maladies neuromusculaires et de la SLA, hôpital La Timone, AP-HM, Aix-Marseille université, avenue Jean-Moulin, Marseille, France
- 11 MRC Centre for Neuromuscular Diseases, National Hospital for Neurology and Neurosurgery, Queen Square, London, UK
- 12 Department of Neurology, Rouen University Hospital, France
- 13 Department of Anaesthesiology, Canisius-Wilhelmina Ziekenhuis, Nijmegen, The Netherlands
- 14 Department of Neurology, Salford Royal NHS Foundation Trust, Greater Manchester, UK
- 15 Nerve-Muscle Unit, Service of Neurology, Department of Clinical Neurosciences, Lausanne University Hospital (CHUV), Lausanne, Switzerland
- 16 Neuromuscular Area, Biodonostia Health Research Institute, Department of Neurology, University Hospital Donostia, CIBERNED, San Sebastián, Spain
- 17 Hospital Galdakao-Usansolo in Biscay, Basque Country, Spain
- 18 Sozialpädiatrisches Zentrum Frankfurt Mitte, Neuromuskuläres Zentrum, Frankfurt, Germany
- 19 Department of Pathology, Radboud University Medical Centre, Nijmegen, The Netherlands
- 20 Departments of Anesthesia and Biomedicine, Basel University and Basel University Hospital, Basel, Switzerland
- 21 Department of Life Sciences, University of Ferrara, Ferrara, Italy

Correspondence to: Joery P. Molenaar, MD  
 Radboud University Medical Center  
 Department of Neurology (HP 935)  
 PO Box 9101, 6500 HB Nijmegen  
 The Netherlands  
 E-mail: joery.molenaar@radboudumc.nl

**Keywords:** Brody disease; ATP2A1; calcium; phenotype; genotype

**Abbreviations:** IVCT = *in vitro* contracture test; MH(S) = malignant hyperthermia (susceptibility); PMCA = plasma membrane Ca<sup>2+</sup> ATPase; SERCA = sarcoplasmic/endoplasmic reticulum Ca<sup>2+</sup> ATPase

## Introduction

Brody disease is a rare, autosomal recessive myopathy with an estimated prevalence of 1 in 10 million (MacLennan, 2000; Voermans *et al.*, 2012). It is caused by mutations in the *ATP2A1* gene, encoding the sarcoplasmic/endoplasmic reticulum Ca<sup>2+</sup> ATPase type 1 (SERCA1) protein leading to exercise-induced muscle stiffness. Furthermore, myalgia and muscle cramps are described, which may worsen upon exposure to cold temperatures (Odermatt *et al.*, 1996, 2000; Novelli *et al.*, 2004; Guglielmi *et al.*, 2013). EMG can reveal silent contractures defined as prolonged involuntary muscle contractions (following voluntary phasic contractions) without electrical activity detected on EMG (Odermatt *et al.*, 2000; Novelli *et al.*, 2004; Vattermi *et al.*, 2010; Mussini *et al.*, 2015). Various specific and non-specific findings have been described upon examination of muscle biopsies, but there is no general

consensus on how often these features are present (Karpati *et al.*, 1986; Benders *et al.*, 1994; Odermatt *et al.*, 2000; Novelli *et al.*, 2004; Vattermi *et al.*, 2010; Sambuughin *et al.*, 2014; Mussini *et al.*, 2015). The current phenotypic characterization of Brody disease is based on 10 case studies with ambiguous results. Moreover, while the focus on Ca<sup>2+</sup> metabolism in muscle has grown, and an increasing number of myopathies caused by Ca<sup>2+</sup> handling abnormalities are recognized, reports of Brody disease remain scarce (Treves *et al.*, 2017).

Brody described the first case of pronounced exercise-induced muscle stiffness in the absence of myotonic discharges in 1969 (Brody, 1969). In 1986, Karpati discovered that this phenotype arises from SERCA1 protein deficiency in skeletal muscle (Karpati *et al.*, 1986). Ten years later, the causative *ATP2A1* gene was identified in two separate families (Odermatt *et al.*, 1996). The disorder is considered to be extremely rare, which is reflected by the limited

number of reported cases, with only 18 genetically confirmed patients described in the literature over the past 32 years (Supplementary Table 1).

The SERCA protein plays a key role in regulating  $\text{Ca}^{2+}$  homeostasis in skeletal muscle fibres. Following depolarization of the sarcolemma, the dihydropyridine receptor activates the ryanodine receptor type 1 (RYR1).  $\text{Ca}^{2+}$  is then released from the sarcoplasmic reticulum into the cytosol where it binds troponin C, effectively initiating the cascade leading to muscle contraction through myosin and actin interaction (cross-bridge cycling). Finally, SERCA lowers the cytoplasmic  $\text{Ca}^{2+}$  concentration by actively transporting it back into the sarcoplasmic reticulum causing muscle relaxation (for a review see Lee, 2010; Treves *et al.*, 2017; Allard, 2018). SERCA1, the isoform affected in Brody disease, is uniquely expressed in type II (fast-twitch) skeletal muscle fibres (Rossi and Dirksen, 2006; Lee, 2010). Therefore, exercise-induced muscle stiffness in Brody disease is mainly induced by phasic exercise (rapid, intense contractions performed by fast-twitch fibres) and not by tonic activity (performed by slow-twitch fibres) as required to maintain posture (Karpati *et al.*, 1986).

Unfortunately, almost 50 years after the initial report by Brody, many questions remain unanswered. The prevalence of specific symptoms, signs and findings on ancillary investigations are unknown. Additionally, little is known about the natural history of the disorder, the effects of symptomatic treatment, and genotype-phenotype correlations. This is likely to result in incomplete recognition and difficulties in counselling. Furthermore, with the use of diagnostic whole exome sequencing, mutations in *ATP2A1* are likely to be encountered more frequently.

In this study we present a comprehensive review of the clinical features and natural course of the 22 new patients (19 novel *ATP2A1* mutations), as well as all 18 previously described patients. We aim to improve the understanding and awareness of Brody disease and provide better means to recognize and diagnose this rare myopathy.

## Materials and methods

### Patient selection

#### Literature patients

We reviewed all English publications on Brody disease in PubMed to select the ‘literature cases’ (previously reported patients). We included all genetically confirmed patients reported after the first case report in 1969 until 2018, with either homozygous or compound heterozygous *ATP2A1* mutations. We numbered them chronologically from L1 to L18.

#### Newly identified patients

We identified all patients that were clinically and genetically diagnosed with Brody disease by the Assistance Publique des Hôpitaux de Paris, U.F. de Cardiogénétique et Myogénétique in France (11 patients from nine families) and the genetics

department of the Radboud University Medical Center in the Netherlands (three patients from two families). The patients that had not previously been described in literature were labelled as ‘new patients’. After contacting authors of previously published Brody disease literature we included two more new patients diagnosed by the Groupe de recherche interdisciplinaire sur les maladies neuromusculaires (GRIMN) in Quebec, Canada. Additionally, one patient was referred by the Queens Square Centre for Neuromuscular Diseases in London, UK; one patient was referred by the Salford Royal NHS Foundation Trust hospital in Manchester, UK; two patients from the Neuromuskuläres Zentrum in Frankfurt am Main, Germany; and finally, two more patients were referred from the Galdakao-Usansolo hospital and University Hospital Donostia, both in Spain. This resulted in 22 new Brody disease patients that we numbered N1 to N22.

### Clinical features

A data sheet was sent to corresponding authors of the literature cases and to clinicians of the new patients, including history, physical examination, results of ancillary investigations, effects of medication and progression of symptoms (Supplementary Table 2).

### Ancillary investigations

Results of ancillary investigations were ascertained from case reports in the literature, the completed data sheets, and from reviewing available medical files (i.e. laboratory testing, EMG, muscle biopsy, and genetic analysis). Stored muscle tissue from previously performed biopsies was used to perform additional immunohistochemical testing, SERCA activity measurements, and SERCA1 western blot analysis.

#### SERCA immunohistochemistry

Immunohistochemical analysis was performed on samples from three new patients. Fragments of biopsies were frozen in liquid nitrogen-precooled isopentane. Serial 7- $\mu\text{m}$  thick cryosections were saturated with 3% bovine serum albumin in phosphate-buffered saline (PBS) for 1 h and stained with monoclonal antibodies against SERCA1 or SERCA2 (1/500; Affinity Bioreagents) for 1 h. After washing with PBS, cryosections were stained with goat anti-mouse 647 IgG antibody for 45 min (Thermo Fisher) and mounted in Mowiol<sup>®</sup> (Dabco).

#### SERCA activity measurement

SERCA activity was previously measured in muscle samples from four literature patients (Patients L1, L5, L6 and L13). Additionally, we measured compound SERCA activity in samples from three new patients (Patients N1, N10 and N12) and one literature patient (Patient L11). These measurements were performed by the Radboud Center for Mitochondrial Medicine on remaining muscle tissue from previously performed muscle biopsies. Because SERCA1 is the predominant isoform expressed in quadriceps and deltoid muscle, compound SERCA activity is a reliable estimate of SERCA1 activity (Yang and Yoo, 1986; Benders *et al.*, 1994; Pauw-Gommans *et al.*, 2006; Mandroukas *et al.*, 2010). The muscle tissue was snap-frozen immediately after obtaining the sample and stored at  $-80^{\circ}\text{C}$ . The compound SERCA activity was measured in muscle homogenates using procedures based on previously described methods (Benders *et al.*, 1994; Vattemi *et al.*, 2010).

## Western blot of SERCA1 protein

Western blot analysis of SERCA1 protein was previously performed in muscle samples from five literature cases. Additionally, we assessed SERCA1 protein content in muscle homogenates from four new patients and one literature patient. Muscle homogenates (2% w/v) were prepared by homogenization using a Potter/Elvehjem tissue homogenizer in 250 mM sucrose, 2 mM EDTA, and 10 mM Tris-HCl (pH 7.6). Protein concentration was determined using the Lowry method. Approximately 20 µg of total protein was loaded per lane on a 10% polyacrylamide gel. Electrophoresis and western blotting were performed following standard laboratory methods, after which SERCA1 protein was detected using anti-SERCA1 monoclonal antibody (ab2819, Abcam, ITK Diagnostics) and a goat-anti-mouse peroxidase-conjugated secondary antibody (P044701-2; Agilent-Dako), followed by chemiluminescent detection. To check for equal loading, blots were stained for GAPDH using anti-GAPDH monoclonal antibody (ab8245, Abcam, ITK Diagnostics).

## Genetic analysis of ATP2A1

Mutation analysis of the *ATP2A1* gene of the new patients was performed by the U.F. Cardiogénétique et Myogénétique (11 patients), by the genetics department of the Radboud University Nijmegen Medical Centre (four patients), by the Jonquière Hospital (two patients), by the Salford Royal National Foundation Trust (one patient), by the Neuromuskuläres Zentrum – Sozialpädiatrisches Zentrum Frankfurt Mitte (two patients), and by the Institute of Genetic Medicine at Newcastle University (two patients). For patients diagnosed in France, genomic DNA was isolated from blood samples by using QIASymphony<sup>®</sup> DSP DNA Midi kit (Qiagen) on a QIASymphony<sup>®</sup> nucleic acid extraction machine (Qiagen). The 23 exons of the *ATP2A1* gene (NM\_004320.4) were investigated by Sanger sequencing in eight patients (primers, PCR and Sanger sequencing conditions available on request). Three patients were analysed using targeted high-throughput sequencing. DNA was captured on an in-house SeqCap<sup>®</sup> EZ library probe (Roche NimbleGen), representing the exonic regions and their flanking regions, for 41 genes involved in skeletal muscle excitability and neuromuscular transmission, including the *ATP2A1* gene. Then the capture product was amplified and sequenced on a Miseq sequencer (Illumina). The mean number of reads for targeted regions was higher than 500, thus allowing a reliable detection of copy number variations as well as point mutations. Genetic analysis in the other centres was performed using similar methods.

DNA analysis of the literature patients has been previously described (Odermatt *et al.*, 1996, 2000; Novelli *et al.*, 2004; Vattemi *et al.*, 2010; Sambuughin *et al.*, 2014; Mussini *et al.*, 2015).

## Ethical considerations

This study was performed according to the guidelines of the local research ethics committees.

## Statistical analysis

Descriptive statistics were used to assess the prevalence of specific symptoms, signs, and results of ancillary investigations (dichotomous outcome: absent or present). For the analysis

of the prevalence, we included only those patients in whom data were available of that specific item.

## Data availability

The data that support the findings of this study are available on request from the corresponding author.

# Results

## Clinical features

We received completed questionnaires from clinicians of all 22 newly diagnosed patients and from 11 of 18 previously described patients. Four literature patients could not be traced by clinicians from the original centre and we did not receive a reply from the authors of three other literature patients. For these seven patients, only the information from the original articles was used.

## Symptoms

Overall, we obtained clinical information on 40 patients with Brody disease from 28 families around the world. Some of the clinical data of the 18 literature patients have been previously summarized (Voermans *et al.*, 2012).

Almost all patients reported onset of symptoms in childhood (38/40). Often symptoms were first noticed during gym classes in primary school or when playing outside with peers, especially during fast alternating movements (e.g. skipping rope or running). The mean age of presentation was  $19.2 \pm 15.0$  years old, and the mean age at diagnosis was  $27.3 \pm 14.6$  years old, resulting in an average doctor delay of  $9.9 \pm 13.7$  years.

Exercise-induced muscle stiffness was reported in all patients, 63% of patients reported stiffness at the start of exercise. The muscle groups predominantly affected were lower limbs (38/38), upper limbs (33/38), and eyelids (24/38). Patients variably reported muscle cramps (defined as involuntary and painful sustained muscle contractions) at rest or during exercise (18/34). Myalgia was commonly reported (20/34) and usually had a generalized distribution. The majority of patients mentioned an increase of symptoms upon exposure to cold temperatures (25/36). Weakness was reported by 31% of patients (11/35).

Physicians reported their patient's disability with a score of 1 (no significant disability and able to carry out all activities and duties; 10/23), or 2 (slight disability but able to look after own affairs; 13/23) on the Modified Rankin Scale (MRS). Impact on daily life was mostly due to the inability to run, difficulties when practising sports and struggling to climb multiple stairs quickly. Heterozygous family members of patients (carriers) did not exhibit the Brody disease phenotype (this information was not systematically gathered but often encountered as family history in medical files).

**Table 1** Clinical characteristics

Patient		History taking							Physical examination								
Patient: family	Sex/AAD	Decade of onset	Pattern of involvement	Muscle stiffness Ex	Muscle stiffness at SOE	Muscle cramps	Myalgia	Increase in cold	Muscle			Athletic app.	DR of upper limb		DR of eyelids		
									weakness	atrophy	hypertrophy		after rep. con.	after sus. con.	after rep. con.	after sus. con.	
<b>Literature patients</b>																	
L1: 1.1	M/42	1st	UL+LL	+		+	Ex	-	+ <sup>a</sup>	-					+		
L2: 1.2	M	Child	UL+LL	+		+									+		
L3: 2.1	M	Child	LL	+						-					+	+	+
L4: 2.2	M			+													
L5: 3.1	M/41	Child	G	+		Ex	Ex+P	+		-		+	+	+	+	+	+
L6: 3.2	M/42	Child	G	+		Ex		+		-		+	+	+	+	+	+
L7: 3.3	M/47	Child	G	+		Ex	Ex+P <sup>a</sup>	+		-		+	+	+	+	+	-
L8: 4.1	M/38	1st	G	+	+	Ex		+		-		-	-	+	+	+	+
L9: 4.2	M/28	Child	G	+	+	Ex	Ex	+		-		-	-	+	+	+	+
L10: 5.1	F	1st	G	+				+	+ <sup>a</sup>			+/-		+	+		
L11: 6.1	M/56	1st	G	+	+	-		+		-		+/-		-	+	-	+
L12: 6.2	M/52	1st	G	+	+	-	+	+		-		+/-		-	+	-	+
L13: 7.1	M/42	Child	G	+	+	-	-	-		-		-		+	+	+	+
L14: 7.2	F	2nd	G	+	+	-	-	-		-		-		+	+	+	+
L15: 8.1	M	1st	G	+		R	P	+		-		-					
L16: 9.1	M	Child	LL				R+P	+		-		-		+	-	-	+
L17: 9.2	F	Child					+										
L18: 10.1	M/50	1st	G	+		R <sup>a</sup>	-	+		-		-		-	+	+	-
<b>New patients</b>																	
N1: 11.1	M/32	1st	G	+		-	-	+		-		-		+	+	+	+
N2: 12.1	F	1st	G	+				+		-		-					
N3: 13.1	M/36	1st	G	+	+	-	-	+		-		+		+	+	+	+
N4: 13.2	F/39	1st	UL+LL+E	+	+	-	-	-		-		-		+	+	-	+
N5: 14.1	F/22	Child	G	+	+	-	-	+		-		+		-	+	-	+
N6: 15.1	M/43	Child	G	+	+	-	Ex+P	+		-		+		+	-	+	-
N7: 16.1	F/20	Child	G	+		Ex	P	+		-				+		+	
N8: 17.1	M/53	Child	G	+		Ex	-	+/-		-		+		+	+	-	+
N9: 18.1	F/17	Child	UL+LL	+		-	-	+		-		+		+		+	+
N10: 19.1	F/26	1st	UL+LL	+	+	-	-	+		-		-		+	+	-	-
N11: 19.2	F/33	Child	UL+LL	+	+	-	-	+		-		-		+	+	-	-
N12: 20.1	M/8	1st	UL+LL+E	+		-	Ex+P	+		-		-		+	-	+	+
N13: 20.2	M/6	1st	UL+LL	+		-	Ex+P	+		-		-		+	+	+	+
N14: 21.1	F/42	1st	UL+LL	+	+	Ex	Ex	-		-		-		+	+	-	-
N15: 22.1	M/27	1st	UL+LL	+	+	Ex	Ex+P	-	+ <sup>a</sup>			-		-	-	-	-
N16: 23.1	M/25	1st	UL+LL+E	+	+	Ex	Ex	+		-		-		+	+	+	+
N17: 24.1	M/28	1st	UL+LL+E	+		Ex	Ex+P+R	-		-		-		+	-	+	+
N18: 25.1	M/56	1st	UL+LL	+		-	P	+		-		+		+	+	-	+
N19: 26.1	F/8	1st	LL	+	+	Ex	Ex	-		-		-		-	-	-	-
N20: 26.2	M/5	1st	LL	+	+	-	-	-		-		-		-	-	-	-
N21: 27.1	F/30	1st	LL+E	+	+	Ex+R	Ex+P	-		-		-		-	-	-	-
N22: 28.2	M/51	3rd	UL+LL	+	+	Ex	Ex+P	+		-		-		+	-	+	-
<b>Total + and +/-</b>				38	19	18	20	26	3	0	13	20	22	27	19	17	
<b>Total -</b>				0	11	16	14	10	32	33	21	10	11	7	12	12	
<b>Total known</b>				38	30	34	34	36	35	33	34	30	33	34	31	28	
<b>Percentage + and +/-</b>				100%	63%	52%	59%	72%	9%	0%	38%	67%	67%	79%	61%	59%	

App. = appearance; AAD = age at diagnosis; Child = childhood; con. = contraction; DR = delayed relaxation; E = eyelids; Ex = during exercise; F = facial; G = generalized (UL+LL+F+E); LL = lower limbs; P = post-exercise; R = in rest; rep. = repetitive; SOE = start of exercise; sus. = sustained; UL = upper limbs.

<sup>a</sup>Rare, mild or minor.

<sup>b</sup>Only in calf muscles.

### Rhabdomyolysis and malignant hyperthermia

Two patients suffered from (an) episode(s) of suspected malignant hyperthermia (MH) following administration of general anaesthetics (Patients L15 and L16). Clinical description of the episodes of these patients has been published in detail previously (Novelli *et al.*, 2004; Guglielmi *et al.*, 2013; Sambuughin *et al.*, 2014). In short, Patient L15

suffered from an episode of generalized muscle contracture associated with fever, rhabdomyolysis (creatin kinase up to 53 000 U/l) and myoglobinuria. He also experienced two episodes of rhabdomyolysis following exercise at ages 19 and 22 with creatine kinase levels up to 221 600 IU/l and 100 000 IU/l, respectively. Patient L16 developed skeletal muscle rigidity with slightly elevated creatine kinase after

general anaesthesia. One other patient (Patient N15) experienced an episode of exertional rhabdomyolysis. Patient L11 experienced several episodes of unexplained hyperthermia. The *RYR1* gene, which is associated with malignant hyperthermia susceptibility (MHS), was analysed in Patients L15–L17, and showed no mutations (Patient L15) and one non-pathogenic variant (Patients L16 and L17; siblings). Eight other patients have undergone general anaesthesia without any adverse reactions.

### Physical examination

Delayed relaxation following repetitive contractions or sustained contraction was observed in 22/33 and 27/34 patients, respectively. Delayed relaxation specifically of the eyelids was seen after repetitive eyelid-closure in 19/31 patients and after sustained forceful eyelid-closure in 17/29 patients. Physical examination revealed no muscle atrophy in any of the patients (0/33) and mild proximal muscle weakness in 3/35 patients (Patients L1, L10 and N15; reported as ‘mild proximal weakness’ or MRC score of  $\geq 4$  of proximal lower limbs). Several patients were described as having an athletic appearance (20/30) and/or as having hypertrophic muscles (10/34). Percussion myotonia was reported in 4/34 patients and tendon reflexes were normal except for Patients N16 and N18 with decreased tendon reflexes, and Patient N17 with increased reflexes. A more detailed overview of all clinical features can be found in Table 2.

### Progression of symptoms

We gathered follow-up data of reported symptoms and physical examination (mean duration of 9.3 years, range 1–29 years) in 27 patients. In another three patients only limited information on progressiveness of symptoms was available (Patients L1, N5 and N10). Of these 30 patients, seven patients reported that symptoms had increased (23%). Of them, four reported increased muscle stiffness, four reported an increase in myalgia, three reported an increase in muscle weakness (self-reported), and three mentioned increased muscle cramps. No development of weakness or atrophy was seen by physicians during follow-up physical examination.

### Treatment

Different medications were used as symptomatic treatment for muscle stiffness, cramps, and myalgia; dantrolene ( $n = 5$ ), verapamil ( $n = 9$ ), mexiletine ( $n = 2$ ), carbamazepine ( $n = 2$ ), ibuprofen ( $n = 2$ ), nifedipine ( $n = 2$ ), acetazolamide ( $n = 1$ ), or unknown muscle relaxants ( $n = 2$ ). Verapamil improved symptoms in three patients but was stopped in two of them because of side effects. Mexiletine improved symptoms in one patient but was similarly stopped because of side effects. The other medications showed no effect and only 1 of 18 treated patients received long-term successful treatment (Patient N15; verapamil). Approximately half of patients (13/31) did not ask for treatment and two patients refused treatment.

## Ancillary investigations

### Laboratory testing

Serum resting creatine kinase levels ( $n = 24$ ) ranged between 50 IU/l and 1300 IU/l. Creatine kinase was considered normal in 12/24 patients and slightly to moderately elevated in 12/24 patients (Table 2).

### EMG

None of the patients had myotonic discharges on EMG ( $n = 30$ ). Silent contractures were present in 18/28 patients (Table 2). EMG showed possible myopathic motor unit potentials in only one patient (Patient N15). Results from nerve conduction velocity testing ( $n = 8$ ) and the McMannis long exercise test ( $n = 2$ ) were normal.

### Histology

There were morphological data available for 22 patients (10 of 18 literature patients and 12 of 22 new patients). The results are summarized in Table 2.

Atrophy of type II fibres was seen in 76% (13/17) of patients, of which two also demonstrated type I atrophy. Only one biopsy (Patient N21) showed exclusive atrophy of type I fibres. In four biopsies further specification of type II atrophy was documented, with specific type IIA atrophy in two and specific type IIB atrophy in the other two samples (Sambuughin *et al.*, 2014; Mussini *et al.*, 2015). Type II atrophy was seen in both normal and athletic build patients to the same extent.

Variability of muscle fibre size was markedly increased in 92% (11/12) of samples.

The percentage of internal nuclei was increased in 82% (14/17) of samples (Table 2). Patient L18 underwent two muscle biopsies (at ages 24 and 42), showing a significant increase in the percentage of internal nuclei in the second biopsy (Mussini *et al.*, 2015). Nuclear centralization and nuclear clumping was sporadically seen in the second biopsy, not to the extent as can be observed in centronuclear myopathies.

In nine biopsies the distribution of type I and type II muscle fibres was quantified. In quadriceps muscle biopsies ( $n = 7$ ), the observed percentages of type II fibres ranged from 58 to 85%; mean 75% (Karpati *et al.*, 1986; Vattemi *et al.*, 2010; Guglielmi *et al.*, 2013) [normal percentage of type II fibres in healthy quadriceps is 50–65% (Pauw-Gommans *et al.*, 2006)]. Furthermore, the percentage of type II fibres in the m. biceps brachii biopsy of Patient L1 (71%) was also increased [normal value:  $59 \pm 8\%$  (Dahmane *et al.*, 2001)]. However, in three patients (Patients N2, N10 and N18) the percentage of type II fibres was reduced. In two biopsies (Patients L18 and N17), a specific decrease in the amount of type IIB fibres was found (Mussini *et al.*, 2015) (Table 2).

Discrete necrosis was found in only one biopsy (Patient L18). The same biopsy also showed sparse regeneration, and two other biopsies showed degeneration (Patients N12 and N22) (Mussini *et al.*, 2015).

**Table 2** Ancillary investigations

Patient	Lab	EMG			Muscle biopsy								
	CK (IU/l)	EMG performed	Silent cont.	Myotonic discharges	Muscle biopsy performed	Biopsied muscle	Atrophy type I fibres	Atrophy type II fibres	Marked fibre size variability	↑Internal nuclei	↓SERCA staining IHC	↓SERCA immunoblot	↓SERCA activity
<b>Literature patients</b>													
L1	50	+	–	–	+	Biceps	–	+		+	+	+	Low
L2	62	+	–	–	+	Biceps	–	+		+			
L3	246	+	+	–	+	Quadriceps	–	+		+	+	+	
L4													
L5					+						–		50%
L6					+	Quadriceps							50%
L7													
L8													
L9		+	–	–									
L10		+	+	–									
L11	Slightly elevated	+	+	–	+	Peroneus		+		+	–	+	67%
L12	Slightly elevated	+	+	–									
L13	256	+	+	–	+	Quadriceps	–	+	+	+	–	+	80%
L14	260–450	+	+	–									
L15	700–1300	+	+	–	+	Quadriceps	–	+	+	+	–	+	
L16	183				+	Quadriceps	–	+	+	+	+	+	
L17	Normal												
L18	733	+	+	–	+ <sup>a</sup>	Biceps/deltoid	–	+	+	+	+		
<b>New patients</b>													
N1	219	–			+	Quadriceps			+	+		+	59%
N2		+	+	–	+	Quadriceps		+			–		
N3		+	+	–	+								
N4		+	+	–	–								
N5		+	–	–	–								
N6	1.5 × normal	+	+	–	+	Deltoid	–	+	+	+	+	+	
N7		+	+	–									
N8		+	+	–	+	Deltoid							
N9		+	+	–	–								
N10		+	+	–	+	Deltoid	–	+	+	+	–	+	59%
N11	111	+	+	–	–								
N12	93	+	–	–	+	Quadriceps	–	–	+/-	–		+	68%
N13		+	–	–	–								
N14	99	+	–	–	–								
N15	72	+	–	–	+	Quadriceps	–	–		–			
N16	713	+	+	–	–								
N17	854	+	–	–	+	Quadriceps	+	+	+	+			
N18	500	+	–	–	+	Tibialis ant.	+	+	+	+	+		
N19	131	–			–								
N20	103	–			–								
N21	2–6 × normal	+	–	–	+	Biceps	+	–	+	+			
N22	300–600	+	–	–	+	Quadriceps	–	–	–	–			
<b>Total +</b>			30	18	0	22	3	13	11	14	6	10	8
<b>Total –</b>			4	10	30	9	12	4	1	3	6	0	0
<b>Total known</b>			34	28	30	31	15	17	12	17	12	10	8
<b>Percentage + and +/-</b>			88%	64%	0%	71%	20%	77%	92%	82%	50%	100%	100%

↑ = increased; ↓ = decreased; + = present/performed; – = not present/not performed; CK = creatine kinase; Cont. = contractures; IHC = immunohistochemistry.

<sup>a</sup>Patient had two biopsies (Mussini *et al.*, 2015).

In two patients, nuclear abnormalities were described. In the muscle biopsy of Patient L16, multiple nuclei were shown to be abnormally elongated (Sambuughin *et al.*, 2014). For Patient L18, a similar elongation of nuclei was described. Furthermore, the two biopsies of Patient L18 showed several other nuclear abnormalities at the ultrastructural level (Mussini *et al.*, 2015).

### *In vitro* contracture test

The *in vitro* contracture test (IVCT), used to assess MHS, was performed in three patients (Patients L1, L15 and L16) (Halsall and Ellis, 1979; Hopkins *et al.*, 2015). In Patients

L15 and L16 (both suffered from episodes of suspected malignant hyperthermia), and in Patient L1 (not suspected of MHS) the IVCT demonstrated a positive result for caffeine and halothane, indicating MHS (Karpatei *et al.*, 1986; Novelli *et al.*, 2004; Guglielmi *et al.*, 2013; Sambuughin *et al.*, 2014).

### SERCA activity

SERCA activity was previously measured in four literature patients. A variety of techniques were used making it difficult to compare the results on a quantitative level. Nonetheless, all evaluations showed a decreased activity.

For Patient L1, SERCA activity was measured as ATP-dependent  $\text{Ca}^{2+}$  transport in membrane fractions and was shown to have a consistently low rate of transport (Karpati *et al.*, 1986). In Patients L5 and L6, compound SERCA activity was reduced by 50% (Benders *et al.*, 1994). In Patient L13, SERCA activity was determined as  $\text{Ca}^{2+}$  dependent ATP transport in whole muscle homogenates and shown to be reduced by ~80% (Vattemi *et al.*, 2010).

Odermatt *et al.* (2000) transfected HEK-293 cells with wild-type and the mutant *ATP2A1* of Patient L11. They showed that the mutant SERCA1 had an altered affinity for  $\text{Ca}^{2+}$ , so that  $\text{Ca}^{2+}$  transport would be nearly non-existent at physiological  $\text{Ca}^{2+}$  levels (Odermatt *et al.*, 2000). We performed SERCA activity analysis in this patient and found SERCA activity to be reduced by 67%. Additionally, we determined SERCA activity in three new patients and found similar results with a reduction of SERCA activity by 59% (Patients N1 and N10), and 68% (Patient N12) (Table 2).

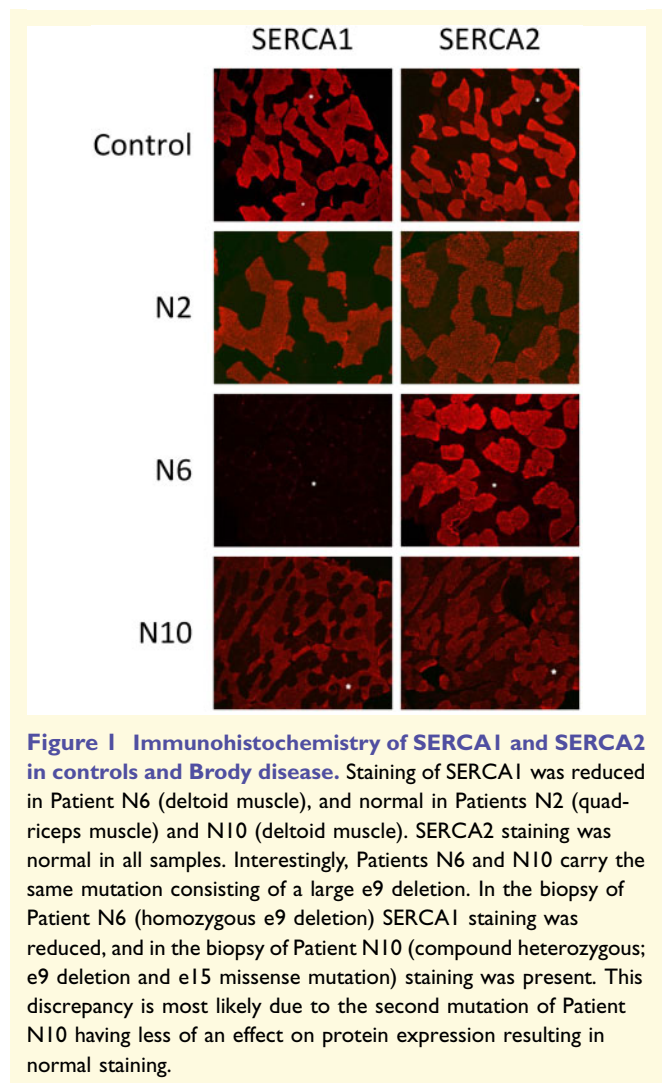
### SERCA expression

Immunohistochemistry was performed in eight literature cases and three new patients (Fig. 1). Compound SERCA staining in type II muscle fibres mainly results in visualization of SERCA1 since this is the predominant isoform in type II fibres (>90%) (Lee, 2010). A severe reduction of compound SERCA was found in type II fibres in Patients L1 and L3. In both patients, staining of SERCA in type I fibres was normal (Karpati *et al.*, 1986). SERCA1 staining revealed a severe reduction in six patients (6/12) and was normal in the other patients (6/12) (Karpati *et al.*, 1986; Benders *et al.*, 1994; Odermatt *et al.*, 2000; Vattemi *et al.*, 2010; Guglielmi *et al.*, 2013; Sambuughin *et al.*, 2014; Mussini *et al.*, 2015). The presence of the SERCA2 isoform was determined by immunohistochemistry in eight biopsies, with normal expression in seven patients and increased expression in one patient (Odermatt *et al.*, 2000; Guglielmi *et al.*, 2013; Sambuughin *et al.*, 2014; Mussini *et al.*, 2015).

Immunoblot analysis was previously performed in five literature patients, either of specific SERCA1 content (Patients L13, L15 and L16) or compound SERCA content (Patients L1 and L3). All immunoblot analyses demonstrated absent or severely decreased amounts of SERCA protein. Additionally, we performed specific SERCA1 western blot analysis in five patients with also marked decreased/absent SERCA1 content in all (Fig. 2).

### Genetic analysis

All *ATP2A1* mutations are listed in Table 3. The location of null mutations (stop mutations, frameshift mutations, splice mutations) within the *ATP2A1* gene is shown in Fig. 3A. The location of mutated or deleted amino acids (missense mutations or in-frame deletion of one codon) within the SERCA1 protein are shown in Fig. 3B.



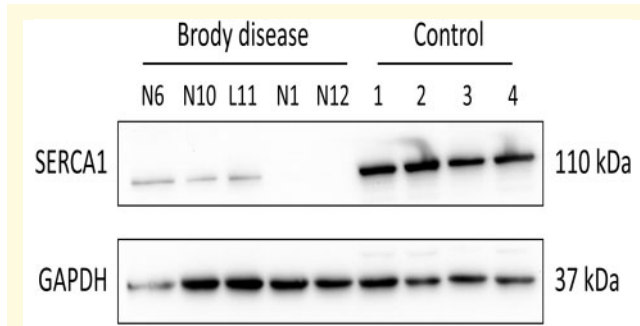
**Figure 1 Immunohistochemistry of SERCA1 and SERCA2 in controls and Brody disease.** Staining of SERCA1 was reduced in Patient N6 (deltoid muscle), and normal in Patients N2 (quadriceps muscle) and N10 (deltoid muscle). SERCA2 staining was normal in all samples. Interestingly, Patients N6 and N10 carry the same mutation consisting of a large e9 deletion. In the biopsy of Patient N6 (homozygous e9 deletion) SERCA1 staining was reduced, and in the biopsy of Patient N10 (compound heterozygous; e9 deletion and e15 missense mutation) staining was present. This discrepancy is most likely due to the second mutation of Patient N10 having less of an effect on protein expression resulting in normal staining.

Missense mutations and in-frame deletions of one codon affected highly conserved amino acids in different domains of the protein (Fig. 3B and C). Some mutations were recurrent: p.Leu67del (Families 7 and 14), c.2464dup (Families 14, 16 and 27), deletion of exon 9 (Families 15 and 19), p.Arg560Cys (Families 21 and 22). Among the 33 different mutations, 11 were missense, three were in-frame deletions of one single codon, seven were frameshift mutations (four out-of-frame small deletions, three out-of-frame small insertions or duplications), six were stop mutations, four were splice site mutations (three affecting canonical donor GT sites at the +1 position of introns 3, 19 and 20, one affecting canonical acceptor AG site at -1 position in intron 15), and two were large rearrangements (deletion of exon 9, deletion of the whole gene).

## Discussion

This study reports the features of the largest cohort of Brody disease patients to date, consisting of 22 new





**Figure 2** Western blot analysis of SERCA1 in Brody disease and control. All Brody disease samples demonstrated severely reduced or absent SERCA1 protein content. See Supplementary material for full gels.

patients carrying 19 novel mutations plus the 18 previously published patients. The findings classify Brody disease as a distinct myopathy in the broader field of calcium-related myopathies.

## Clinical features

Brody disease typically manifests in the first decade of life, but patients usually do not present to a physician until their third decade. All patients suffered from exercise-induced muscle stiffness, resulting in an inability to run and mild-to-moderate difficulties in daily life in most. Delayed muscle relaxation occurred especially after explosive, short and repetitive contractions, which is explained by the selective type II muscle fibre involvement. Symptoms were usually present in upper and lower limbs and eyelids. Eyelid involvement is most likely the result of the high percentage of type II muscle fibres in orbicularis oculi muscle (~90%) (Hwang *et al.*, 2011).

One-third of patients reported muscle weakness, while physical examination revealed only mild muscle weakness in three patients. Patients might acknowledge stiffness as weakness or rate their disability as weakness. Physical examination revealed no atrophy; in contrast, an athletic build was observed in approximately two-thirds of patients. Symptoms were progressive in 23% of patients but did not become debilitating (MRS score of 1 or 2). However, with a relatively young age at last evaluation in our cohort (mean 34, range 6–56 years old) it is possible that progression of symptoms occurs in late adulthood. This would be supported by the progression of myopathic changes in the second muscle biopsy in Patient L18 at the age of 42 years (18 years after the first muscle biopsy). Nevertheless, pronounced muscle weakness and atrophy excludes Brody disease as a diagnosis. This might be related to the selective type II involvement that allows for compensation with normally functioning type I muscle fibres throughout life.

## Ancillary investigations

### EMG

EMG is characterized by the presence of silent contractures and absence of myotonic discharges. Therefore, when EMG shows no myotonic discharges in patients clinically suspected of having a myotonic disorder, provocation of possible silent contractures is recommended by performing rapid contractions during EMG. Furthermore, we recommend using ‘silent contractures’ instead of ‘silent cramps’, as cramps have a strict electromyographical definition that does not apply to patients with Brody disease (i.e. action potentials that gradually increase and later decrease in number and frequency) (Stern and Bernick, 1990; Parisi *et al.*, 2003).

### Malignant hyperthermia and *in vitro* contracture test

The MH-like episodes in Brody disease were most likely anaesthesia- or exercise-induced rhabdomyolysis without signs of hypermetabolism, as can be seen in other myopathies (Klingler *et al.*, 2005). The association between Brody disease and MH is likely related to the accumulation of  $\text{Ca}^{2+}$  ions in the cytoplasm due to decreased reuptake of  $\text{Ca}^{2+}$  in the sarcoplasmic reticulum (Sambuughin *et al.*, 2014; Rosenberg *et al.*, 2015). In MH caused by *RYR1/CACNA1S* mutations the hypermetabolic state is due to a rapid continuous cycle of  $\text{Ca}^{2+}$  efflux (via *RYR1*) and influx (via *SERCA*) from/into the sarcoplasmic reticulum, consuming large amounts of ATP; whereas in Brody disease, activity of the *RYR1* channel is normal but the dysfunctional *SERCA1* protein causes the prolonged contraction. Furthermore, *RYR1* channels are located in both types of skeletal muscle fibres whereas *SERCA1* is only expressed in type II muscle fibres. Therefore, the overall accumulation of  $\text{Ca}^{2+}$  ions would be less pronounced in Brody disease leading to a higher threshold for developing MH-like events compared to classical MH. The finding that all four IVCTs in patients with Brody disease were positive is likely due to the increased cytoplasmic  $\text{Ca}^{2+}$  concentration, which does not necessarily indicate an increased risk of classic malignant hyperthermia (Sambuughin *et al.*, 2014).

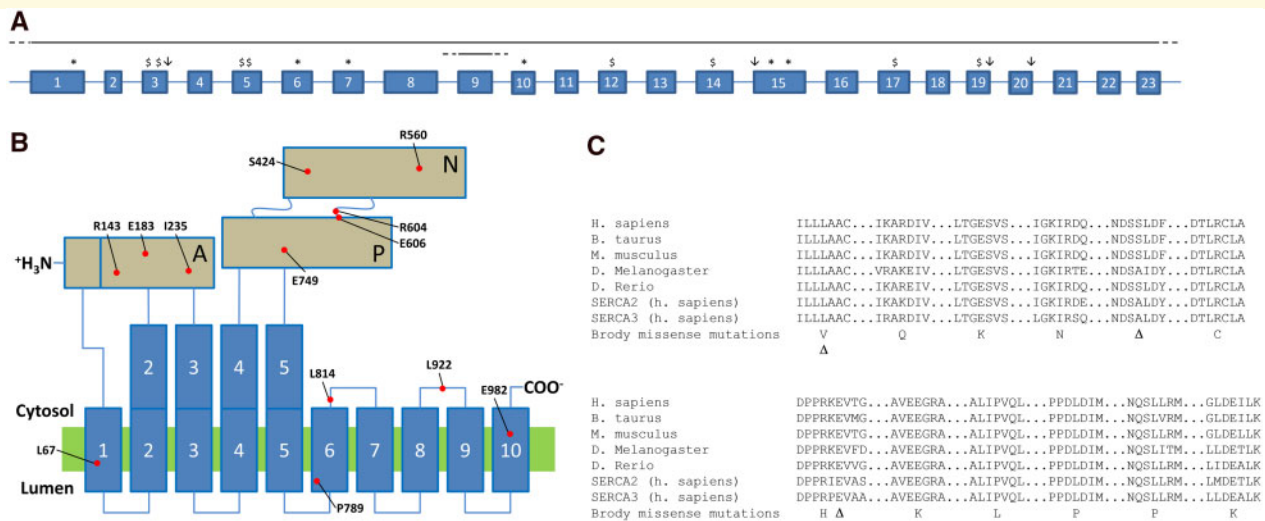
One of the patients (Patient L15), who was clinically suspected of MHS and had a positive IVCT, also carried an autosomal dominant chromosomal translocation [(2;7)(p11.2;p12.1)] (Novelli *et al.*, 2004; Guglielmi *et al.*, 2013). The genes in the breakpoints and adjacent regions of this translocation are not known to be associated with MHS (such as *RYR1*, *CACNA1S*, *STAC3*, *CASQ1*, or *JSRP1*) (Stowell, 2014; Rosenberg *et al.*, 2015). His father also carried this translocation and had a positive IVCT but did not suffer from MH episodes (Novelli *et al.*, 2004; Guglielmi *et al.*, 2013). As the positive IVCT in this family co-segregated with the chromosomal translocation, the *ATP2A1* mutations may not be the only cause of the episode of MH in this patient.

**Table 3 Genetic characteristics**

Genotype	Mutation 1	Location	Mutation type	Mutation 2	Location	Mutation type
<b>Literature patients</b>						
L1	c.440del p.Pro147Leufs*34	e 5	fs 1-bp del	-	-	-
L2	c.440del p.Pro147Leufs*34	e 5	fs 1-bp del	-	-	-
L3	c.2025C>A p.Cys675*	e 15	Nonsense	c.219+1G>C	i 3 (ds)	Splice
L4	c.2025C>A p.Cys675*	e 15	Nonsense	c.219+1G>C	i 3 (ds)	Splice
L5	c.592C>T p.Arg198*	e 7	Nonsense	-	-	-
L6	c.592C>T p.Arg198*	e 7	Nonsense	-	-	-
L7	c.592C>T p.Arg198*	e 7	Nonsense	-	-	-
L8	c.162_163insAA p.Glu55Lysfs*43	e 3	fs 2-bp ins	-	-	-
L9	c.162_163insAA p.Glu55Lysfs*43	e 3	fs 2-bp ins	-	-	-
L10	c.100G>T p.Glu34*	e 1	Stop	c.1167C>A p.Tyr389*	e 10	Nonsense
L11	c.2366C>T p.Pro789Leu	e 17	Missense	-	-	-
L12	c.2366C>T p.Pro789Leu	e 17	Missense	-	-	-
L13	c.198_200del p.Leu67del	e 3	In-frame 3-bp del	c.1817_1819del p.Glu606del	e 15	In-frame 3-bp del
L14	c.198_200del p.Leu67del	e 3	in-frame 3-bp del	c.1817_1819del p.Glu606del	e 15	In-frame 3-bp del
L15	c.178del p.Leu60Serfs*37	e 3	fs 1-bp del	c.200T>G p.Leu67Arg	e 3	Missense
L16	c.704T>A p.Ile235Asn	e 8	Missense	c.2944G>A p.Glu982Lys	e 21	Missense
L17	c.704T>A p.Ile235Asn	e 8	Missense	c.2944G>A p.Glu982Lys	e 21	Missense
L18	c.1742_1743del p.Ser581Cysfs*7	e 14	fs 2-bp del	c.2744+1G>T	i 19 (ds)	Splice
<b>New patients</b>						
N1	c.490C>T p.Arg164*	e 6	Nonsense	-	-	-
N2	c.547G>A p.Glu183Lys	e 7	Missense	-	-	-
N3	c.2245G>A p.Glu749Lys	e 16	Missense	-	-	-
N4	c.2245G>A p.Glu749Lys	e 16	Missense	-	-	-
N5	c.198_200del p.Leu67del /	e 3	In-frame 3-bp del	c.2464dup p.Arg822Profs*39	e 17	fs 1-bp dup
N6	c.(928+1_929-1)_(1094+1_1095-1)del	e 9 and sr	large del e 9	-	-	-
N7	c.1271_1273del p.Ser424del	e 11	In-frame 3-bp del	c.2464dup p.Arg822Profs*39	e 17	fs 1-bp dup
N8	c.2765T>C p.Leu922Pro	e 20	Missense	-	-	-
N9	c.2101-1G>T	i 15 (as)	splice	-	-	-
N10	c.(928+1_929-1)_(1094+1_1095-1)del	e 9 and sr	Large del e 9	c.1811G>A p.Arg604His	e 15	Missense
N11	c.(928+1_929-1)_(1094+1_1095-1)del	e 9 and sr	Large del e 9	c.1811G>A p.Arg604His	e 15	Missense
N12	c.100G>T p.Glu34*	e 1	Stop	-	-	-
N13	c.100G>T p.Glu34*	e 1	Stop	-	-	-
N14	c.1678C>T p.Arg560Cys	e 14	Missense	-	-	-
N15	c.1678C>T p.Arg560Cys	e 14	Missense	c.2441T>C p.Leu814Pro	e 17	Missense
N16	c.1966C>T p.Arg656*	e 15	Nonsense	-	-	-
N17	c.(1_235)_(417_3)del	all e and i	Large del all e and i	c.2464dup p.Arg822Profs*39	e 17	fs 1-bp dup
N18	c.(1_235)_(417_3)del	all e and i	Large del all e and i	c.2464dup p.Arg822Profs*39	e 17	fs 1-bp dup
N19	c.2862+1G>A	i 20 (ds)	Splice	-	-	-
N20	c.2862+1G>A	i 20 (ds)	Splice	-	-	-
N21	c.361dupG p.Glu121Glyfs*3	e5	fs 1-bp dup	c.2464dup p.Arg822Profs*39	e 17	In-frame 1-bp dup
N22	c.428G>A p.Arg143Gln	e 5	Missense	c.1317_1318del p.Glu439Aspfs*80	e 12	fs 2-bp del

Mutations are numbered according to transcript NM\_004320.4.

as = acceptor site; ds = donor site; del = deletion; dup = duplication; e = exon(s); fs = frameshift; ins = insertion; i = intron(s); sr = surrounding regions.



**Figure 3 Diversity of ATP2A1 mutations in patients with Brody disease. (A)** Localization of stop mutations (asterisk), frameshift mutations (dollar sign), splice site mutations (downward arrow), and large scale rearrangements (horizontal lines with dashed line ends) are shown on a schematic gene architecture that encompasses the 23 exons of transcript NM\_4320.4. **(B)** Localization of missense mutations and in-frame deletions of one single codon. The corresponding mutated or deleted amino acids are displayed in a schematic representation of the SERCA1 protein according to crystallographic data. The protein comprises 10 alpha helices, one actuator domain (A), one nucleotide binding domain (N) and one phosphorylation domain (P). Mutated amino acids are located in different regions of the protein. **(C)** The SERCA1 protein is highly conserved, as shown by the conservation of amino acids that are affected in our patients with Brody disease. Missense mutations are shown in the single letter amino acid code, and deletion of an amino acid is shown by a delta symbol.

Nonetheless, as these rhabdomyolysis or MH-like events are potentially life-threatening conditions, we consider Brody disease patients at risk for these reactions and advise taking necessary perioperative precautions: avoid administration of succinylcholine and inhalational agents, and monitor vital functions including core temperature (Glahn *et al.*, 2010; Rosenberg *et al.*, 2015).

### Histology

Systematic re-evaluation of the biopsy reports showed fibre type II atrophy, increased fibre size variability, and an increased number of internal nuclei. Hence, Brody disease is very unlikely in the case of a normal biopsy. The atrophy of type II fibres most likely results from selective involvement of these muscle fibres. Given the athletic appearance in many patients, the common finding of atrophic muscle fibres was somewhat unexpected. Pseudohypertrophy is unlikely to explain the athletic build as no excessive fatty infiltration or fibrosis was seen in the biopsies. In one patient (Patient L16), type I fibres were hypertrophic, which could serve as a compensatory mechanism and explain the athletic build (Sambuughin *et al.*, 2014). However, this has not been demonstrated in other patients and is therefore unlikely to fully explain this phenomenon. Further investigation, e.g. muscle ultrasound and/or MRI could help to unravel the discrepancy between the muscular build and histological findings.

### SERCA expression

In Brody disease, immunohistochemical staining of SERCA1 is reduced or normal and therefore not a reliable tool to assess SERCA1 expression (Benders *et al.*, 1994, 1996; Guglielmi *et al.*, 2013). In contrast, the immunoblot analysis showed reduced or absent SERCA1 protein in all tested patients.

Although immunohistochemistry and immunoblot analysis both assess protein expression, in some cases the results do not fully correlate. This is most likely to be because of the lower sensitivity of immunohistochemistry, where a moderately decreased SERCA1 content could still lead to full colour saturation due to the abundant natural expression of SERCA1 in skeletal muscle. Furthermore, the antibodies used for immunohistochemistry might attach to cross reactive epitopes resulting in false positive results. Guglielmi *et al.* (2013) demonstrated that the decreased SERCA1 content detected in patients with Brody disease by western blot was probably not due to a decreased solubility of the mutated protein compared to wild-type SERCA1.

All performed western blot analyses were qualitatively assessed as reduced or absent protein expression, resulting in no specific correlation with genotype. We cannot exclude that with the use of quantitative western blot techniques such a correlation could be demonstrated. Similarly, no correlation was found between genotype and immunohistochemistry results, with both normal and abnormal

staining seen in all different mutation types (i.e. null mutations, missense mutations, in-frame deletions, and large scale rearrangements).

### SERCA activity

SERCA activity was determined in different muscles and using different techniques across patients, all showing severely reduced residual activity. If  $\text{Ca}^{2+}$  removal from the cytosol in type II muscle fibres was only regulated by SERCA1, this would be predicted to result in a severe phenotype. The mild phenotype suggests that different compensatory mechanisms preserve the ability of patients to relax their muscles at a reasonable speed after contraction (Karpati *et al.*, 1986; Guglielmi *et al.*, 2013). Ectopic expression of SERCA2 in type II muscle fibres could be one of these mechanisms (Sambuughin *et al.*, 2014). The first evidence for the upregulation of SERCA2 in patients with Brody disease was an increased immunohistochemical staining of SERCA2, in type I as well as in type II fibres (Sambuughin *et al.*, 2014). However, ectopic expression of SERCA2 was deemed unlikely by Guglielmi *et al.* (2013) who did not detect increased expression of SERCA2 in type II fibres by immunohistochemical analysis. Other possible compensatory mechanisms are downregulation of myoregulin (SERCA1 inhibitor), or increasing the mitochondrial calcium-uptake mechanisms and  $\text{Ca}^{2+}$  transportation from the cytoplasm to the extracellular space (PMCA,  $\text{Na}^+/\text{Ca}^{2+}$ -antiporter) (MacLennan, 2000). In normal conditions there is little contribution of the  $\text{Na}^+/\text{Ca}^{2+}$ -antiporter in total  $\text{Ca}^{2+}$  efflux from the cytosol (Melzer *et al.*, 1995). However, it is possible that in Brody disease this antiporter and other alternative  $\text{Ca}^{2+}$  efflux pathways are upregulated to compensate for the decreased SERCA1 activity. Interestingly, this theory has been tested in cattle with congenital pseudomyotonia, an animal model of Brody disease caused by recessive *ATP2A1* mutations with a similar phenotype (Drogemuller *et al.*, 2008; Bianchini *et al.*, 2014; Dorotea *et al.*, 2015; Mascarello and Sacchetto, 2016). In these cattle it has been confirmed that the loss of SERCA1 was not compensated by increased expression of SERCA2. Conversely, immunoblot analysis revealed an increased expression of PMCA in pathological muscle (Dorotea *et al.*, 2015). Furthermore, it was demonstrated that proteasomal inhibition can functionally rescue mutated SERCA1 in muscle fibres from pseudomyotonia cattle by avoiding the premature disposal of mutated SERCA1 (Bianchini *et al.*, 2014). Future research would be needed to test if similar compensatory mechanisms can be identified in patients with Brody disease.

### Genetic analysis

DNA alterations at the *ATP2A1* gene locus represent the whole spectrum of mutation types: whole gene deletion, single exon deletion, splice site mutations, small exonic frameshift deletions or insertions, missense substitutions, and in-frame small deletions (Table 3 and Fig. 3). Genetic diagnosis of Brody disease relies on the identification of a

homozygous or compound heterozygous mutation. Recessive pathogenicity of mutations is evident for null mutations (stop, frameshift, splice, large rearrangements), but may be discussed for missense mutations or single codon deletions, according to the conservation of affected amino acids throughout species and paralogues. The missense mutations in this cohort were located at highly conserved sites (Fig. 3C) and are likely to impair the conformational cycle of the protein and  $\text{Ca}^{2+}$  pumping. Brody disease mutations are loss-of-function mutations, either by preventing the protein from being expressed correctly, or by hampering its function. No gradation in severity could be demonstrated in clinical presentation (e.g. age of onset, muscle weakness, disability) or mutation type leading to no particular phenotype-to-genotype correlations. However, with a mean age of 34 years (range 6–56 years), it is possible that certain phenotype-to-genotype correlations could become apparent with advancing age.

This study significantly increases the number of known *ATP2A1* mutations contributing to the often difficult interpretation of genetic variants with next generation genetic testing. Pathogenicity of *ATP2A1* variants can be assessed using clinical (delayed muscle relaxation), electrophysiological (silent contractures), and laboratory (SERCA activity and western blot of muscle) testing. In parallel, abnormal activity and/or expression of SERCA should lead to extensive analysis of the *ATP2A1* gene. This is demonstrated by the decreased SERCA activity and expression found in Patients N10 and N11 (Family 19), which made the geneticist further analyse the genetic data in which previously only one *ATP2A1* mutation was identified. This led to the discovery of an additional large-scale deletion of exon 9, confirming Brody disease as the diagnosis.

### Treatment

Verapamil and dantrolene, drugs that limit the  $\text{Ca}^{2+}$  release from the sarcoplasmic reticulum by inhibition of the RYR1 channel and the dihydropyridine receptor, have been prescribed but often stopped because of side effects (Benders *et al.*, 1994; Ikemoto *et al.*, 2001).

For future research, drugs that lower the cytosolic  $\text{Ca}^{2+}$  concentration by different mechanisms could possibly be tested in Brody disease. For instance, drugs that promote the peptide named dwarf open reading frame (DWORF), which decreases the activity of myoregulin (SERCA1 inhibitor), and phospholamban and sarcolipin (SERCA2 inhibitors) (Nelson *et al.*, 2016). Drugs that would directly inhibit myoregulin or that promote  $\text{Ca}^{2+}$  efflux from the cytosol by promoting PMCA or the  $\text{Na}^+/\text{Ca}^{2+}$ -antiporter could also potentially alleviate symptoms in Brody disease (Anderson *et al.*, 2015). Moreover, drugs inhibiting proteasomal disposal of mutated SERCA1 might have beneficial effects in Brody patients (Bianchini *et al.*, 2014).

To our knowledge, drugs that alter the function/activity of these proteins do not yet exist but would make very interesting pharmacological targets, both for Brody

disease and other (cardio)myopathies with abnormal  $\text{Ca}^{2+}$  handling.

## Diagnostic pathway and considerations

Non-dystrophic myotonia was the most frequent differential diagnosis, but can easily be distinguished from Brody disease. First, Brody disease only involves fast-twitch muscle fibres leading to selective muscle stiffness with short, repetitive and explosive movements, whereas delayed relaxation in myotonic disorders depends mostly on intensity and repetition of contractions and can demonstrate a typical warm-up phenomenon (Trip *et al.*, 2009). Second, myotonic disorders will typically demonstrate myotonic discharges at myography that are not seen in Brody disease (Kuntzer, 2004; Miller, 2008; Trip *et al.*, 2009; Matthews *et al.*, 2010).

Silent contractures can also be found in McArdle disease (glycogen storage disease type V). However, McArdle disease typically presents with a second wind phenomenon, permanently high creatine kinase levels and episodes of rhabdomyolysis during/after (rigorous) exercise that are not or are rarely seen in Brody disease (Godfrey and Quinlivan, 2016). The histopathological changes seen in Brody disease can also be seen in numerous other neuromuscular disorders (e.g. muscular dystrophies, congenital myasthenic syndromes, glucocorticoid myopathy) (Ciciliot *et al.*, 2013; Eymard *et al.*, 2013; Matsumoto *et al.*, 2019). However, in general, these disorders do not display the distinct phenotype of Brody disease (i.e. delayed muscle relaxation with absence of muscle weakness) making them unlikely differential diagnostic candidates.

In line with current practice in (suspected) non-dystrophic myotonias, we recommend specific sequencing of the *ATP2A1* gene as a first step (or performing Next Generation Sequencing including *ATP2A1* analysis) when a patient is clinically suspected of Brody disease. If an *ATP2A1* mutation of unknown pathogenicity is identified, we recommend a muscle biopsy with measurement of SERCA activity and/or western blot analysis of SERCA1 to confirm the pathogenicity of the mutations and diagnose Brody disease.

We suspect that Brody disease is indeed less rare than previously estimated because of the relatively mild phenotype and the delayed relaxation and silent contractures that can be missed if not specifically looked for. The advances in genetic testing with gene panel screening and whole exome/genome sequencing most likely contributes to the recent increase in diagnosed Brody disease patients.

## Calcium-related myopathies

In recent years there is an increased identification of mutations in other (novel) genes encoding proteins involved in  $\text{Ca}^{2+}$  homeostasis (Snoeck *et al.*, 2015; Treves *et al.*, 2017; Jungbluth *et al.*, 2018). We suggest that Brody disease should be classified as a calcium-related myopathy, in

parallel with other myopathies affecting calcium handling such as *RYR1*-related myopathy and tubular aggregate myopathy linked to *STIM1*, *ORAI1*, and *CASQ1* mutations (Bohm and Laporte, 2018). *STIM1* and *ORAI1* are involved in  $\text{Ca}^{2+}$  entry activated by depletion of sarcoplasmic reticulum stores. Calsequestrin (*CASQ1*) acts as the major  $\text{Ca}^{2+}$  buffering protein in the sarcoplasmic reticulum of skeletal muscle and is mainly expressed in fast twitch muscle fibres. There is heterogeneous age of onset and disease severity in tubular aggregate myopathy, with *CASQ1* mutations representing the milder end of the spectrum. Both Brody disease and tubular aggregate myopathy are associated with exercise-induced muscle cramps, stiffness and myalgia. However, tubular aggregate myopathy often gives rise to progressive muscle weakness, a feature not seen in Brody myopathy (Funk *et al.*, 2013; Bohm and Laporte, 2018).

In summary, we have clarified the phenotype and diagnostic possibilities to improve understanding and recognition of Brody disease as a distinct myopathy in the broader field of calcium-related myopathies. Future research could further clarify the compensatory mechanisms of cytosolic  $\text{Ca}^{2+}$  removal involved in Brody disease, which could ultimately lead to targeted treatment options.

## Acknowledgements

Karina Horsting-Wethly, Berendien Stoltenborg-Hogenkamp, and Doreen Fialho.

## Funding

No funding was provided towards this work.

## Competing interests

The authors report no competing interests.

## Supplementary material

Supplementary material is available at *Brain* online.

## References

- Allard B. From excitation to intracellular  $\text{Ca}^{2+}$  movements in skeletal muscle: basic aspects and related clinical disorders. *Neuromuscul Disord* 2018; 28: 394–401.
- Anderson DM, Anderson KM, Chang CL, Makarewich CA, Nelson BR, McAnally JR, *et al.* A micropeptide encoded by a putative long noncoding RNA regulates muscle performance. *Cell* 2015; 160: 595–606.
- Benders AA, Veerkamp JH, Oosterhof A, Jongen PJ, Bindels RJ, Smit LM, *et al.*  $\text{Ca}^{2+}$  homeostasis in Brody's disease. A study in skeletal muscle and cultured muscle cells and the effects of dantrolene and verapamil. *J Clin Invest* 1994; 94: 741–8.

- Benders AA, Wevers RA, Veerkamp JH. Ion transport in human skeletal muscle cells: disturbances in myotonic dystrophy and Brody's disease. *Acta Physiol Scand* 1996; 156: 355–67.
- Bianchini E, Testoni S, Gentile A, Cali T, Ottolini D, Villa A, et al. Inhibition of ubiquitin proteasome system rescues the defective sarco(endo)plasmic reticulum Ca<sup>2+</sup>-ATPase (SERCA1) protein causing Chianina cattle pseudomyotonia. *J Biol Chem* 2014; 289: 33073–82.
- Bohm J, Laporte J. Gain-of-function mutations in STIM1 and ORAI1 causing tubular aggregate myopathy and Stormorken syndrome. *Cell Calcium* 2018; 76: 1–9.
- Brody IA. Muscle contracture induced by exercise. A syndrome attributable to decreased relaxing factor. *N Engl J Med* 1969; 281: 187–92.
- Ciciliot S, Rossi AC, Dyar KA, Blaauw B, Schiaffino S. Muscle type and fiber type specificity in muscle wasting. *Int J Biochem Cell Biol* 2013; 45: 2191–9.
- Dahmane R, Valen IV, Knez N, Eren I. Evaluation of the ability to make non-invasive estimation of muscle contractile properties on the basis of the muscle belly response. *Med Biol Eng Comput* 2001; 39: 51–5.
- Dorotea T, Grunberg W, Murgiano L, Plattet P, Drogemuller C, Mascarello F, et al. Fast-twitch skeletal muscle fiber adaptation to SERCA1 deficiency in a Dutch Improved Red and White calf pseudomyotonia case. *Neuromuscul Disord* 2015; 25: 888–97.
- Drogemuller C, Drogemuller M, Leeb T, Mascarello F, Testoni S, Rossi M, et al. Identification of a missense mutation in the bovine ATP2A1 gene in congenital pseudomyotonia of Chianina cattle: an animal model of human Brody disease. *Genomics* 2008; 92: 474–7.
- Eymard B, Stojkovic T, Sternberg D, Richard P, Nicole S, Fournier E, et al. Congenital myasthenic syndromes: difficulties in the diagnosis, course and prognosis, and therapy—The French National Congenital Myasthenic Syndrome Network experience. *Rev Neurol* 2013; 169: S45–55.
- Funk F, Ceuterick-de Groote C, Martin JJ, Meinhardt A, Taratuto AL, De Bleecker J, et al. Morphological spectrum and clinical features of myopathies with tubular aggregates. *Histol Histopathol* 2013; 28: 1041–54.
- Glahn KP, Ellis FR, Halsall PJ, Muller CR, Snoeck MM, Urwyler A, et al. Recognizing and managing a malignant hyperthermia crisis: guidelines from the European Malignant Hyperthermia Group. *Br J Anaesth* 2010; 105: 417–20.
- Godfrey R, Quinlivan R. Skeletal muscle disorders of glycogenolysis and glycolysis. *Nat Rev Neurol* 2016; 12: 393–402.
- Guglielmi V, Vattemi G, Gualandi F, Voermans NC, Marini M, Scotton C, et al. SERCA1 protein expression in muscle of patients with Brody disease and Brody syndrome and in cultured human muscle fibers. *Mol Genet Metab* 2013; 110: 162–9.
- Halsall PJ, Ellis FR. A screening test for the malignant hyperpyrexia phenotype using suxamethonium-induced contracture of muscle treated with caffeine and its inhibition by dantrolene. *Br J Anaesth* 1979; 51: 753–6.
- Hopkins PM, Ruffert H, Snoeck MM, Girard T, Glahn KP, Ellis FR, et al. European Malignant Hyperthermia Group guidelines for investigation of malignant hyperthermia susceptibility. *Br J Anaesth* 2015; 115: 531–9.
- Hwang K, Huan F, Kim DJ. Muscle fiber types of human orbicularis oculi muscle. *J Craniofac Surg* 2011; 22: 1827–30.
- Ikemoto T, Hosoya T, Aoyama H, Kihara Y, Suzuki M, Endo M. Effects of dantrolene and its derivatives on Ca(2+) release from the sarcoplasmic reticulum of mouse skeletal muscle fibres. *Br J Pharmacol* 2001; 134: 729–36.
- Jungbluth H, Treves S, Zorzato F, Sarkozy A, Ochala J, Sewry C, et al. Congenital myopathies: disorders of excitation-contraction coupling and muscle contraction. *Nat Rev Neurol* 2018; 14: 151–67.
- Karpati G, Charuk J, Carpenter S, Jablecki C, Holland P. Myopathy caused by a deficiency of Ca<sup>2+</sup>-adenosine triphosphatase in sarcoplasmic reticulum (Brody's disease). *Ann Neurol* 1986; 20: 38–49.
- Klingler W, Lehmann-Horn F, Jurkat-Rott K. Complications of anaesthesia in neuromuscular disorders. *Neuromuscul Disord* 2005; 15: 195–206.
- Kuntzer T. Electrophysiological testing in muscle channelopathies. *Rev Neurol* 2004; 160: S49–54.
- Lee EH. Ca<sup>2+</sup> channels and skeletal muscle diseases. *Prog Biophys Mol Biol* 2010; 103: 35–43.
- MacLennan DH. Ca<sup>2+</sup> signalling and muscle disease. *Eur J Biochem* 2000; 267: 5291–7.
- Mandroukas A, Heller J, Metaxas TI, Christoulas K, Vamvakoudis E, Stefanidis P, et al. Deltoid muscle characteristics in wrestlers. *Int J Sports Med* 2010; 31: 148–53.
- Mascarello F, Sacchetto R. Structural study of skeletal muscle fibres in healthy and pseudomyotonia affected cattle. *Ann Anat* 2016; 207: 21–6.
- Matsumoto C, Mori-Yoshimura M, Noguchi S, Endo Y, Oya Y, Murata M, et al. Phenotype of a limb-girdle congenital myasthenic syndrome patient carrying a GFPT1 mutation. *Brain Dev* 2019; 41: 470–3.
- Matthews E, Fialho D, Tan SV, Venance SL, Cannon SC, Sternberg D, et al. The non-dystrophic myotonias: molecular pathogenesis, diagnosis and treatment. *Brain* 2010; 133: 9–22.
- Melzer W, Herrmann-Frank A, Luttgau HC. The role of Ca<sup>2+</sup> ions in excitation-contraction coupling of skeletal muscle fibres. *Biochim Biophys Acta* 1995; 1241: 59–116.
- Miller TM. Differential diagnosis of myotonic disorders. *Muscle Nerve* 2008; 37: 293–9.
- Mussini JM, Magot A, Hantai D, Sternberg D, Chevessier F, Pereon Y. Atypical nuclear abnormalities in a patient with Brody disease. *Neuromuscul Disord* 2015; 25: 773–9.
- Nelson BR, Makarewich CA, Anderson DM, Winders BR, Troupes CD, Wu F, et al. A peptide encoded by a transcript annotated as long noncoding RNA enhances SERCA activity in muscle. *Science* 2016; 351: 271–5.
- Novelli A, Valente EM, Bernardini L, Ceccarini C, Sinibaldi L, Caputo V, et al. Autosomal dominant Brody disease cosegregates with a chromosomal (2;7)(p11.2;p12.1) translocation in an Italian family. *Eur J Hum Genet* 2004; 12: 579–83.
- Odermatt A, Barton K, Khanna VK, Mathieu J, Escolar D, Kuntzer T, et al. The mutation of Pro789 to Leu reduces the activity of the fast-twitch skeletal muscle sarco(endo)plasmic reticulum Ca<sup>2+</sup> ATPase (SERCA1) and is associated with Brody disease. *Hum Genet* 2000; 106: 482–91.
- Odermatt A, Taschner PE, Khanna VK, Busch HF, Karpati G, Jablecki CK, et al. Mutations in the gene-encoding SERCA1, the fast-twitch skeletal muscle sarcoplasmic reticulum Ca<sup>2+</sup> ATPase, are associated with Brody disease. *Nat Genet* 1996; 14: 191–4.
- Parisi L, Pierelli F, Amabile G, Valente G, Calandriello E, Fattapposta F, et al. Muscular cramps: proposals for a new classification. *Acta Neurol Scand* 2003; 107: 176–86.
- Pauw-Gommans IM, Gerrits KH, de Haan A, van Engelen BG. Muscle slowness in a family with nemaline myopathy. *Neuromuscul Disord* 2006; 16: 477–80.
- Rosenberg H, Pollock N, Schiemann A, Bulger T, Stowell K. Malignant hyperthermia: a review. *Orphanet J Rare Dis* 2015; 10: 93.
- Rossi AE, Dirksen RT. Sarcoplasmic reticulum: the dynamic calcium governor of muscle. *Muscle Nerve* 2006; 33: 715–31.
- Sambuughin N, Zvaritch E, Kraeva N, Sizova O, Sivak E, Dickson K, et al. Exome analysis identifies Brody myopathy in a family diagnosed with malignant hyperthermia susceptibility. *Mol Genet Genomic Med* 2014; 2: 472–83.
- Snoeck M, van Engelen BG, Kusters B, Lammens M, Meijer R, Molenaar JP, et al. RYR1-related myopathies: a wide spectrum of phenotypes throughout life. *Eur J Neurol* 2015; 22: 1094–112.

- Stern LZ, Bernick C. Muscle cramps. In: Walker HK, Hall WD, Hurst JW, editors. *Clinical methods: the history, physical, and laboratory examinations*. Boston; 1990.
- Stowell KM. DNA testing for malignant hyperthermia: the reality and the dream. *Anesth Analg* 2014; 118: 397–406.
- Treves S, Jungbluth H, Voermans N, Muntoni F, Zorzato F. Ca(2+) handling abnormalities in early-onset muscle diseases: novel concepts and perspectives. *Semin Cell Dev Biol* 2017; 64: 201–12.
- Trip J, Drost G, Ginjaar HB, Nieman FH, van der Kooij AJ, de Visser M, et al. Redefining the clinical phenotypes of non-dystrophic myotonic syndromes. *J Neurol Neurosurg Psychiatry* 2009; 80: 647–52.
- Vattemi G, Gualandi F, Oosterhof A, Marini M, Tonin P, Rimessi P, et al. Brody disease: insights into biochemical features of SERCA1 and identification of a novel mutation. *J Neuropathol Exp Neurol* 2010; 69: 246–52.
- Voermans NC, Laan AE, Oosterhof A, van Kuppevelt TH, Drost G, Lammens M, et al. Brody syndrome: a clinically heterogeneous entity distinct from Brody disease: a review of literature and a cross-sectional clinical study in 17 patients. *Neuromuscul Disord* 2012; 22: 944–54.
- Yang JC, Yoo YJ. Histochemical muscle fiber types of autopsied human gastrocnemius, soleus, peroneus longus and tibialis anterior muscles. *Kor J Pathol* 1986; 20: 413–26.