



# Clinical use of contrast-enhanced ultrasound beyond the liver: a focus on renal, splenic, and pancreatic applications

# ULTRA SONO GRAPHY

Giorgia Tedesco, Alessandro Sarno, Giulio Rizzo, Annamaria Grecchi, Ilaria Testa, Gabriele Giannotti, Mirko D'Onofrio

Department of Radiology, G.B. Rossi Hospital, University of Verona, Verona, Italy

## REVIEW ARTICLE

<https://doi.org/10.14366/usg.18061>  
pISSN: 2288-5919 • eISSN: 2288-5943  
Ultrasonography 2019;38:278-288

Contrast-enhanced ultrasound (CEUS) is a relatively novel, but increasingly used, diagnostic imaging modality. In recent years, due to its safety, quickness, and repeatability, several studies have demonstrated the accuracy, specificity, and sensitivity of CEUS. The European Federation of Societies for Ultrasound in Medicine and Biology has recently updated the previous guidelines from 2012 for the use of CEUS in non-hepatic applications. This review deals with the clinical use and applications of CEUS for the evaluation of non-hepatic abdominal organs, focusing on renal, splenic, and pancreatic applications.

**Keywords:** Ultrasonography, contrast-enhanced; Kidney; Spleen; Pancreas

Received: October 27, 2018  
Revised: December 27, 2018  
Accepted: December 30, 2018

**Correspondence to:**  
Mirko D'Onofrio, MD, Department of Radiology, G.B. Rossi Hospital, University of Verona, Piazzale L.A. Scuro 10, 37134 Verona, Italy  
Tel. +39-045-812-4301  
Fax. +39-045-802-7490  
E-mail: [mirko.donofrio@univr.it](mailto:mirko.donofrio@univr.it)

## Introduction

Contrast-enhanced ultrasound (CEUS) is a dynamic imaging technique based on intravenous injection or instillation into body cavities of an agent made up of microbubbles. During each exam, continuous insonation of the region of interest, with real-time evaluation of all phases, is performed. The microbubbles are excreted from the lung and the liver, making them safe for patients with a history of chronic renal insufficiency, dialysis, kidney transplant, and nephrectomy. Other advantages are that microbubbles do not contain iodine, have a very low rate of anaphylactoid reactions, do not use ionizing radiation, and are relatively inexpensive [1]. In the literature, several authors have stressed the important role of CEUS in the evaluation of liver disease, recommending its clinical use as a supplement to cross-sectional imaging in treatment planning, control, and monitoring of malignant liver lesions [2–4].

Unlike in Korea, the use of CEUS in Europe has only been approved for a limited number of non-hepatic indications in adults [5]; but its numerous benefits, compared to its risks, has recently made it an emergent imaging technique for non-hepatic applications as well. For this reason, the European Federation of Societies for Ultrasound in Medicine and Biology (EFSUMB) has recently described and recommended several possible applications of CEUS for various conditions involving the gastrointestinal and genitourinary tract, pancreatic gland, main vessels, and superficial organs, such as the thyroid, lymph nodes, salivary glands, breasts, and joints [6].

The ultrasonography (US) contrast agents currently used in diagnostic US of the liver are SonoVue, Definity/Luminity, and Sonazoid. In contrast to SonoVue, which is a pure intravascular agent without

This is an Open Access article distributed under the terms of the Creative Commons Attribution Non-Commercial License (<http://creativecommons.org/licenses/by-nc/4.0/>) which permits unrestricted non-commercial use, distribution, and reproduction in any medium, provided the original work is properly cited.

Copyright © 2019 Korean Society of Ultrasound in Medicine (KSUM)



**How to cite this article:**  
Tedesco G, Sarno A, Rizzo G, Grecchi A, Testa I, Giannotti G, et al. Clinical use of contrast-enhanced ultrasound beyond the liver: a focus on renal, splenic, and pancreatic applications. Ultrasonography. 2019 Oct;38(4):278-288.

an interstitial extravascular phase, Sonazoid is an intravascular agent, licensed only in Japan and South Korea, which can also be taken up by the Kupffer cells in the sinusoidal spaces, allowing both vascular-phase and Kupffer-phase images to be obtained [7,8].

Although studies have recently demonstrated the benefits of the use of US contrast agents in children, no US contrast agent manufactured today is registered for pediatric use in Europe and CEUS is still used off-label in pediatric patients [6,9,10]. SonoVue has recently been approved by the United States Food and Drug Administration under the name of Lumason to be used in hepatic investigations and in assessments of vesico-ureteral reflux in children [6,11].

## Kidney

US is the first-line imaging modality for evaluating kidney diseases. The use of a microbubble-based contrast agent permits a better assessment of microcirculation and perfusion of the kidney than Doppler US, with no risk of nephropathy [12].

### Imaging Protocol and Normal Findings

During a renal study with CEUS, the following phases are described: first the arterial pedicle and cortex enhance in the cortical phase, which occurs 15–30 seconds after the injection, and then the cortex and medulla enhance together in the parenchymal phase (25 seconds to 4 minutes after the injection), which can also be divided into early (25 seconds to 1 minute) and late (1–4 minutes) components [6,12]. Because of the high cortical perfusion, a lower dose of contrast agent is used (typically 1–1.5 mL of SonoVue, compared with 2.4 mL in a typical liver study) to avoid obscuration of the deeper parts of the kidney [12].

### Role of CEUS

The majority of adult patients have at least 1 renal lesion, and many renal lesions are incidentally detected by imaging. Most renal lesions are benign simple cysts, but in other cases, they can be solid or mixed solid and cystic [13,14]. These masses require multiphase contrast-enhanced renal imaging—specifically, contrast-enhanced computed tomography (CECT) or magnetic resonance imaging (MRI) with intravenous injection of iodinated contrast or gadolinium, respectively—in order to evaluate enhancement characteristics that often differ between benign and malignant lesions [15]. In this scenario, CEUS plays an important role both in the characterization of some indeterminate masses on computed tomography (CT) and MRI and as a valuable alternative tool in selected patients in whom iodinated contrast medium or gadolinium is contraindicated or when CT or MRI scans are otherwise deemed inappropriate [16]. According

to the recent update of the EFSUMB guidelines, the indications for the use of CEUS in the kidneys are suspected vascular disorders (infarction, cortical necrosis), differentiating between tumors and pseudotumors, characterization and follow-up of complex cystic masses, identification of renal abscesses, and radiofrequency ablation of non-surgical masses [6,17]. CEUS plays a very important role in distinguishing between solid lesions and hyperdense cysts. In fact, hyperdense renal lesions on unenhanced CT (20–70 Hounsfield units [HU]) require correlation with conventional sonography, where they can frequently be confidently diagnosed as cystic. In less conclusive cases, CEUS may be an alternative imaging technique to demonstrate the absence or presence of vascular flow within the lesion, avoiding both the radiation dose and potential nephrotoxicity of iodinate agents used in CT scans and the risk of false negatives for hypovascular tumors [18,19].

### Renal Lesions

#### *Solid lesions*

CEUS allows a detailed assessment of the neoplastic circulation and has the potential to differentiate malignant from benign renal lesions when they appear as hypoechoic [12,20].

CEUS is more sensitive than contrast-enhanced CT and MRI in detecting vascularity in hypovascular lesions [18], and it is also sensitive in identifying unenhancing cystic areas, necrosis, debris, and hemorrhagic foci in tumors that may be hard to detect on CECT and MRI, especially in small lesions [18].

On CEUS, renal tumors show different patterns of enhancement in comparison with the renal parenchyma in at least one phase. Renal clear cell carcinoma (RCC) usually shows hyperenhancement or isoenhancement, generally inhomogeneous, in the cortical phase, washout in the late phase, and perilesional rim-like enhancement [21], whereas papillary carcinoma tends to show less hyperenhancement, usually homogeneous, during the cortical phase [21,22].

Angiomyolipoma generally shows homogeneous isoenhancement or hypoenhancement and prolonged enhancement [23], but when it presents a hypoechoic rim, cystic component, or pseudocapsule, it may be difficult to differentiate from small (<3 cm) echogenic RCC [12]. Moreover, studies have recently demonstrated that tumors smaller than 3 cm may frequently show homogeneous enhancement on CEUS, regardless of the histologic subtype [23].

Renal oncocytomas cannot be differentiated from RCC because of their similar enhancement patterns [24].

Instead, solid renal tumors may be easily distinguished from pseudotumors, abscesses, and ischemic disorders of the kidneys, as pseudotumors remain isoechoic to the normal renal parenchyma in all phases, abscesses are seen as a non-enhancing area (solitary

or within areas of pyelonephritis), and infarcts appear as wedge-shaped non-enhancing areas within an otherwise enhanced kidney [6].

Concerning solid renal lesions, several studies have evaluated the diagnostic accuracy of CEUS, compared with CT and MRI, for the differential diagnosis of benign and malignant renal lesions, applying both qualitative and quantitative features. Unfortunately, according to the literature and updated guidelines, CEUS cannot be used—either with qualitative or quantitative methods—to differentiate renal solid cancerous histotypes [17,20,23,25].

### *Cystic lesions*

Cystic renal masses are common and can vary from simple to complex; the complexity of cysts may be due to hemorrhagic, infectious, or ischemic processes inside the lesion [26]. Around 10% of renal cell carcinomas appear as complex cystic renal masses [27]. In contrast to what their malignant appearance suggests, some cystic lesions can remain stable for a long time, while malignant cysts often need timely surgery. Consequently, accurate diagnosis is essential to guide clinical management. The Bosniak classification of renal cysts based on CT was first published in 1986 and modified in 1993 [28–30] in order to predict the risk of malignancy and establish treatment recommendations [31]. This classification system distinguishes five categories (1, 2, 2F, 3, and 4) of cystic renal masses according to the number of septa; the thickness of the cyst walls or septa; the enhancement of the septa, wall, nodule, or other solid components; and the presence of calcifications [26,28,32–34]. The Bosniak classification has been applied using CEUS and a classification system similar that for CECT [15,32] has been proposed [35,36]. In clinical practice, the greatest difficulty arises for all modalities in differentiating among categories II, IIF, and III and in recommending surgery or conservative follow-up [32,37,38]. Several studies have investigated the accuracy of CEUS compared with CECT and MRI. A recent meta-analysis conducted by Lan et al. [39] revealed that the sensitivity of CEUS was higher than that of CECT, while the specificity of CEUS was slightly lower than that of CECT. The high spatial resolution of CEUS permits the detection of more septa, thickened walls and septa, and more solid components than is possible using CT [37,38,40]. Moreover, evaluation in real time can also help in the assessment of cysts with several confluent septa that may mimic a solid mass [15]. Because of the characteristic scattering property of microbubbles, the tiny capillaries that feed hair-line septa can also be revealed. This fact explains why several authors have found CEUS to show higher sensitivity than CT in depicting the cystic wall and septa vascularity [15,38,40–43]. However, minimal septal enhancement can also occur in benign renal cystic lesions, and many authors have reported that CEUS can upgrade some cystic masses compared with CT when using the

Bosniak classification system [43–45]. Recently, Zhou et al. [37] performed a meta-analysis comparing the diagnostic efficacy of CEUS with that of MRI for cystic renal masses, and suggested that CEUS is equivalent to MRI in the diagnostic value for cystic renal masses, although it has higher sensitivity and lower specificity than MRI.

### **Summary**

The most interesting field of renal CEUS applications regards the characterization of renal cysts (Fig. 1). In clinical practice, CEUS may be used to characterize and follow-up complex cysts found on conventional US and to refine the correct Bosniak category of indeterminate renal cysts on CECT. Due to its high sensitivity and low specificity, CEUS should always be used in combination with CECT in order to improve the lesion detection rate and to decrease the misdiagnosis rate. For solid lesions, CEUS has recently been recommended to evaluate low- to moderate-risk lesions in patients who have absolute or relative contraindications to CECT or MRI and as a secondary test for indeterminate lesions (small lesions or with a threshold of 15–20 HU) on CECT or MRI [25].

## **Spleen**

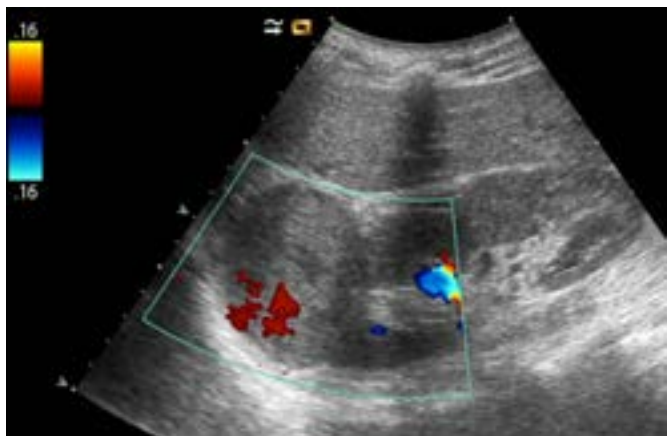
The splenic parenchyma is always evaluated during abdominal US. The location, homogeneous parenchyma, and small size of the spleen make it well suited for CEUS examinations.

### **Imaging Protocol and Normal Findings**

Due to the particular vascularization of the spleen in the early phase after the injection of microbubbles (after 12–18 seconds), an inhomogeneous opacification (a "zebra-striped" pattern) may be seen [46]. This heterogeneous appearance creates a potential pitfall to interpretation, especially for inexperienced practitioners, and makes it difficult to identify lesions that are not accurately located on gray-scale images [47]. After 60 seconds, the parenchyma enhances homogeneously with late-phase enhancement. The spleen, like the liver, has the property of retaining microbubbles, resulting in persistent late-phase enhancement that usually persists for 5–7 minutes [6,46].

### **Role of CEUS in Splenic Disease**

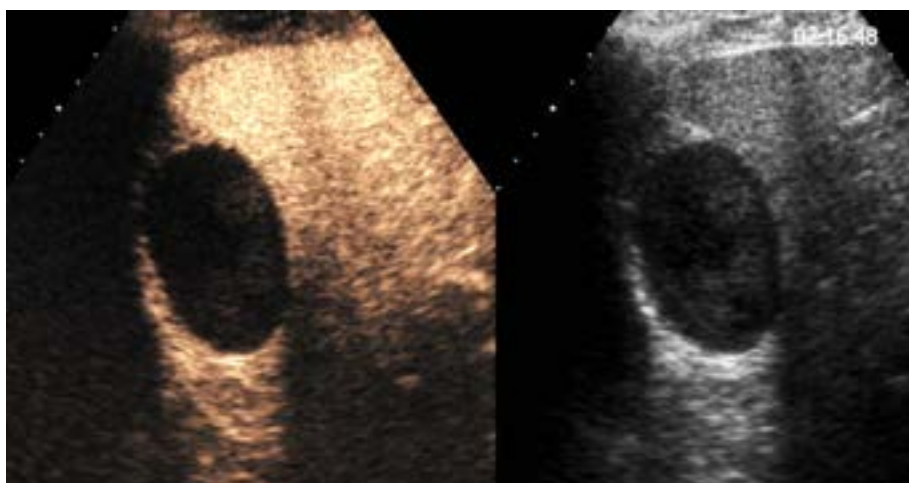
According to the recent update of the EFSUMB guidelines, CEUS can be used to evaluate abnormal splenic size and to identify infarctions, ectopic splenic tissue, and splenic lesions. CEUS is particularly recommended to distinguish simple cysts from abscesses in selected cases and focal solid benign lesions from malignant ones, especially when echo-poor on US [6]. The spleen is frequently involved in



A

**Fig. 1.** Contrast-enhanced ultrasonography (CEUS) study of the kidney of a 67-year-old man with a renal cyst.

**A.** Doppler ultrasonography shows a solid hypoechoic mass in the upper pole of the kidney with Doppler intralesional artifacts. **B.** CEUS shows a completely avascular complex renal cyst.



B

patients with intra-abdominal trauma, and CEUS could play an interesting and emergent role in the detect and follow-up of splenic traumatic lesions [48,49].

In any case, knowledge of the patient's clinical presentation, past medical history, laboratory tests, and previous imaging is often essential for a differential diagnosis [50].

### Splenic Tumors

An early and precise differential diagnosis between benign and malignant focal splenic lesions can provide a timely and rational treatment modality for the clinical choice between invasive and noninvasive management.

Only a few CEUS studies in the literature have investigated splenic tissue [51]. According to these studies, the sensitivity, specificity, and accuracy of CEUS are all higher than those of US. Moreover, CEUS showed comparable performance to positron emission tomography computed tomography (PET-CT) diagnosis [51]. Small echogenic

lesions of the spleen are most common benign vascular tumors (hemangiomas or hamartomas). They often show iso-enhancement or hyper-enhancement in the arterial phase, rarely followed by slow, modest, and incomplete washout [6,47]. Instead, focal, echo-poor, splenic lesions are usually malignant and represent a diagnostic challenge [47]. They are more frequently multiple, fast-growing, and present inhomogeneous enhancement with necrotic areas in the arterial phase and rapid and complete washout in the early and late phases [47,51]. The presence of irregular intralesional vessels and a 'dotted' appearance in the parenchymal phase are other features of malignant lesions [50].

Malignant splenic lesions are almost always either lymphomas or metastases [47].

Non-lymphomatous metastases are very rare and represent a sign of advanced disease of melanoma, breast cancer, and lung cancer. They mainly show inhomogeneous hypo-enhancement in the arterial phase and a rapid wash-in and rapid wash-out pattern with

a contrast agent [50,51]. Late-phase imaging is very important for depicting the microcirculation in areas of viable tumors that may be mistaken for necrosis, which is essential when assessing response to chemotherapy [50]. CEUS is used to characterize these masses only when CT and/or MRI and PET are contraindicated or inconclusive. Splenic lymphoma is usually a manifestation of systemic lymphoma, mostly non-Hodgkin disease, while primitive lymphoma of the spleen is rare [46]. On US imaging, splenic lymphoma may appear as small nodules or miliary infiltrations, typical of low-grade lymphoma, or as large masses and bulky infiltrative disease, found in high-grade lymphoma [46,50]. Lesions are typically hypoechoic compared with normal splenic parenchyma; after therapy, recurrent lesions frequently show a heterogeneous or 'target' appearance [46,51,52]. In the arterial phase, they may be homogeneously iso-enhancing or hypo-enhancing relative to the splenic parenchyma, with internal irregular vessels, while in the parenchymal phase they become hypo-enhancing, due to rapid washout [50]. In a recent prospective study, Picardi et al. [53] compared CEUS and fluorine-18 fluorodeoxyglucose (FDG)-PET in order to detect nodular infiltration in the spleen of patients with newly diagnosed Hodgkin lymphoma. They evaluated 100 adult patients indicated for pre-treatment staging according to the Ann Arbor system, and demonstrated that CEUS was more sensitive in identifying splenic nodules positive for lymphoma than CT and FDG-PET were. This was valid both for small nodules (<1 cm) and for larger ones (>1.1 cm), and this finding led to a change in Ann Arbor staging system. Therefore, even in the absence of histologic proof, CEUS should be recommended as a part of the diagnostic work-up to stage patients with Hodgkin lymphoma in order to avoid the risk of understaging and undertreatment [53].

### Splenic Trauma

In a prospective multi-centric study, Catalano et al. [54] evaluated 156 adult patients with clinical and abdominal suspicion of blunt or penetrating abdominal trauma, considering CT and surgery as the reference standards. In accordance with the current literature, they found that CEUS may improve the detection and severity assessment of abdominal injuries [48,54–57]. In particular, for the spleen, they demonstrated that the sensitivity, specificity, and accuracy of CEUS were 93%, 99%, and 97% higher, respectively, than those of baseline US [54]. Comparable results were presented by Sessa et al. in a study of 256 patients with low-energy isolated abdominal trauma. They evaluated the accuracy of CEUS and demonstrated that, in these patients, US should be replaced by CEUS as the first-line approach, because it shows a high sensitivity in both lesion detection and grading [58].

The venous phase is the most accurate for detecting traumatic lesions of the spleen [48].

On the basis of the distribution of contrast material (homogeneous, heterogeneous, or absent) CEUS can identify parenchymal injuries, including contusions, lacerations, hematomas, bleeding, infarcts, and arteriovenous fistulas [57]. It should be used after the Focused Assessment with Sonography in Trauma (FAST) protocol or US, especially when the baseline US detects peritoneal/retroperitoneal fluid but fails to identify organ injury and/or demonstrates subtle parenchyma changes, or in cases of negative US findings with persistent laboratory suspicion in hemodynamically stable patients with a history of low-energy trauma [48,54,57,59].

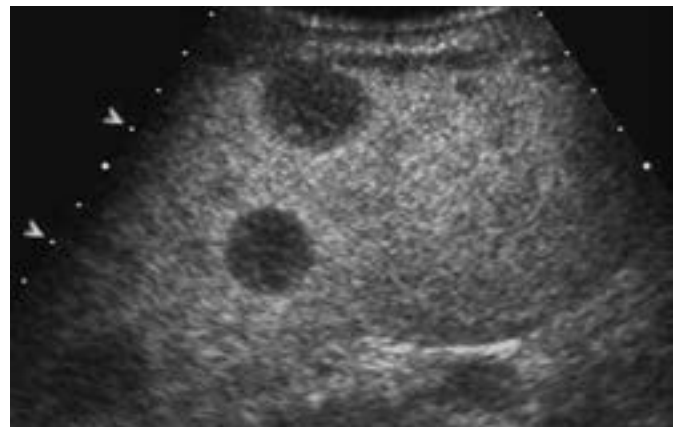
Pseudoaneurysm is a rare complication of splenic trauma, but its identification is essential to avoid delayed splenic rupture. It is seen as well-delineated anechoic lesion on US and as an area of hyperenhancement in arterial-phase lesions on CEUS [51].

### Summary

CEUS may significantly improve the accuracy of the detection and characterization of focal splenic lesions, especially malignant ones (Fig. 2). Concerning malignant lesions, the differential diagnosis between lymphoma and metastases is impossible on the basis of splenic CEUS appearance alone, although necrosis is more commonly seen in metastatic disease [50].

CEUS could play a valuable role in selected patients with abdominal trauma for the diagnosis and follow-up of splenic injuries; for unstable trauma patients; for cases of abdominal trauma in which CECT is contraindicated, failed, or unclear; and in monitoring of conservatively treated injuries [49,54].

CT should instead be reserved for cases of severe trauma with clinical suspicion of multiorgan lesions and cases with inconclusive CEUS findings [59].



**Fig. 2.** Contrast-enhanced ultrasonography study of the spleen of a 60-year-old woman with splenic lymphoma. Multiple splenic hypoechoic hypovascular malignant nodules can be seen, with a final diagnosis of lymphoma.

## Pancreas

CEUS of the pancreas leads to a major improvement in the diagnostic accuracy of US, which is usually applied in the initial evaluation of pancreatic diseases. When a pancreatic lesion, frequently incidental, is detected on US, an immediate differential diagnosis is essential for appropriate management.

### Imaging Protocol and Normal Findings

The blood supply of the pancreas is entirely arterial, so that enhancement of the gland begins almost together with aortic enhancement. In a pancreatic CEUS study, it is possible to distinguish an arterial phase (15–20 seconds after the microbubble injection), in which parenchymal enhancement may be seen, and a portal venous phase (from 30 to 120 seconds after injection), characterized by enhancement of the portal vein. During the late phase (about 120 seconds after injection) a complete evaluation of the liver should be performed, in order to identify possible metastatic lesions [60,61].

### Role of CEUS

CEUS is a safe and accurate imaging method for differentiating solid from cystic pancreatic tumors and solid tumors from pseudo-tumor masses; doing so influences the choice of further examinations and allows a faster diagnosis to be obtained [62].

According to the most recent EFSUMB guidelines, CEUS can be used to distinguish between ductal pancreatic adenocarcinoma, which represents the most common primary malignancy of the pancreas [6,63], and pancreatic neuroendocrine tumor [6].

Among cystic pancreatic lesions, CEUS can distinguish cystic tumors from pseudocysts and detect the presence of vascular or avascular (necrotic) components in cystic lesions. Furthermore, CEUS is recommended for the follow-up of indeterminate pancreatic cysts and necrotizing pancreatitis [6].

### Solid Pancreatic Tumors

On CEUS, pancreatic adenocarcinoma typically appears as a hypoenhancing mass compared to the surrounding parenchyma [64–68] and shows minimal enhancement in all the dynamic phases, because of its intense desmoplastic reaction with relatively poor mean vascular density and perfusion [69]. In the Pancreatic Multicenter Ultrasound Study (PAMUS) meta-analysis, a high accuracy of CEUS in characterizing pancreatic masses was reported, as solid pancreatic lesions were correctly characterized in respect to pathology with an accuracy of 91.7% and pancreatic ductal adenocarcinoma was correctly characterized with an accuracy of 87.8% [70]. In the literature, a specificity close to 100% for

transabdominal CEUS diagnosis of ductal adenocarcinoma, with a sensitivity of 90%, has been reported [71,72]. Recently, a meta-analysis was conducted with the aim of evaluating the role of CEUS in differentiating among pancreatic lesions. The authors reported a sensitivity of 89% and specificity of 84% for CEUS in the differentiation between ductal adenocarcinoma from non-ductal adenocarcinoma and a sensitivity of 95% and a specificity of 72% of CEUS in distinguishing neoplastic from non-neoplastic lesions [73]. According to the European Neuroendocrine Tumor Society (ENETS) Consensus Guidelines from 2012, CEUS is considered an alternative imaging method to diagnose pancreatic neuroendocrine tumors and to accurately assess the liver staging of the disease [74].

### Cystic Pancreatic Lesions

Cystic lesions of the pancreas include a large variety of lesions, with different etiology and biology, each requiring a different management strategy [75,76]. Therefore, the evaluation of a pancreatic cystic tumor should enable differentiation between benign and malignant lesions [77].

Mucinous cystic neoplasms (MCNs) represent about 10% of all cystic pancreatic lesions [78] and include mucinous neoplasms with low-grade dysplasia (MCN) and mucinous cystadenocarcinoma. MCN is a benign lesion with a high malignant potential [79], and surgical resection is required in all cases. As stressed by the authors of new EFSUMB guidelines, thanks to the microbubble-specific software that deletes all background signals and only shows the signal of the blood-pool contrast agent, CEUS can clearly demonstrate the micro-vascularization of septa and solid components of cystic pancreatic lesions, improving the differential diagnosis between mucinous cystic tumors and pseudocysts [64,80]. Pancreatic pseudocysts are persistent, late, peri-pancreatic collections that often develop after the onset of acute pancreatitis. They present a thin encapsulating wall, contain only fluid or fluid mixed with non-vascularized debris, and characteristically do not enhance in any phase on CEUS [70,80,81]. The reported sensitivity and specificity of CEUS in characterizing pseudocysts is very high [82].

Intraductal papillary mucinous neoplasms (IPMNs) are a group of exocrine mucin-producing tumors that spread into the main pancreatic duct and/or its collateral branches. They often show benign behavior, but they sometimes present solid components (perfused nodules) and a high malignant potential. Unfortunately, CEUS is not able to demonstrate communication with the ductal system, which is essential for the final diagnosis of IPMN, but it may be helpful for differentiating between perfused (nodules) and non-perfused (mucin plugs) areas [81,83,84].

Serous cystadenoma (SCA) is a benign cystic tumor, with a

typical lobulated microcystic honeycomb architecture, thin wall, and thin multiple septa orientated toward the center [77], that never communicates with the main pancreatic duct [85], and is well demonstrated on magnetic resonance cholangiopancreatography [86]. The absence of communication with the main pancreatic duct is not demonstrable by US or CEUS [81]. SCAs are typically hypervascular and, therefore, hyperenhancing on CEUS, since the septa are composed of abundant sub-epithelial micro- and macrovessels, and especially when the cysts are small, they may mimic a solid lesion [76,87,88].

**Acute and Chronic Pancreatitis**

In acute pancreatitis, CEUS is an alternative imaging method for diagnosing mild and severe forms that, due to hyperemia, appear

hypervascularized [64] and for delineating parenchymal necrosis in cases of severe acute pancreatitis, which appears as non-enhanced lesions, with a high accuracy [89]. Due to the lack of a panoramic view, CEUS may not substitute for the first CT examination for staging acute pancreatitis. However, it may be used in follow-up of acute pancreatitis, reducing the number of CT examinations [89].

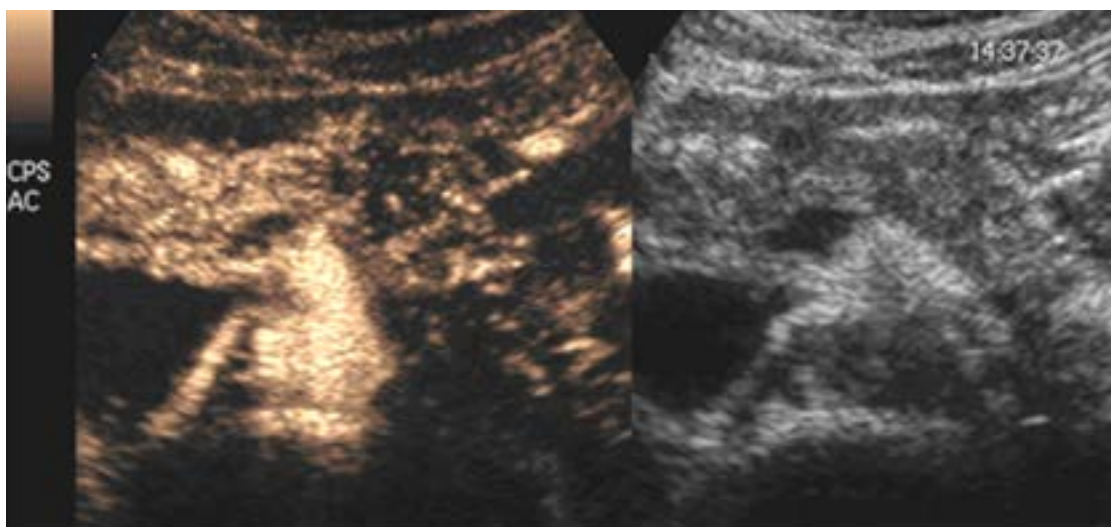
Within the category of chronic pancreatitis, autoimmune pancreatitis is a rare disorder of presumed autoimmune etiology that accounts for up to 10% of chronic pancreatitis cases [90]. This inflammatory process shows three patterns of distribution: focal, multifocal, and diffuse. The focal pattern is less common than diffuse one, but it often involves the pancreatic head and may be confused with ductal adenocarcinoma. In clinical practice, CEUS may play an important role in differentiating these 2 entities. A



A

**Fig. 3.** Contrast-enhanced ultrasonography (CEUS) study of the pancreas of a 56-year-old man with a solid pancreatic tumor.

**A.** On ultrasonography, an incidental isoechoic small lesion can be seen in the body of the pancreas, causing dilation of the main pancreatic duct. **B.** CEUS after the injection of microbubbles enabled an immediate diagnosis of pancreatic ductal adenocarcinoma because the lesion was markedly hypovascular in all phases.



B

recent retrospective study of Dong et al. [91] reported that on CEUS, autoimmune pancreatitis displayed focal or diffuse isoenhancement (86.6%), in comparison to the surrounding parenchyma in the arterial phase and hyperenhancement (65%) or isoenhancement (35%) in the late phase, in contrast to ductal adenocarcinoma, which appeared hypoenhancing (93.7%) in all phases of the study.

## Summary

CEUS is very useful for diagnosing pancreatic tumors and for characterizing and differentiating ductal adenocarcinoma (Fig. 3) from other pancreatic lesions, such as neuroendocrine tumors or focal pancreatitis [73]. It may help to define the size and the margins of pancreatic lesions, and therefore may be useful for guiding pancreatic biopsies [92]. Furthermore, with the use of CEUS, changes in pancreatic tumor vascularization during chemotherapy can be documented [93].

CEUS can be used to characterize cystic pancreatic lesions, and it is recommended for the follow-up of borderline cystic lesions, if well visualized on US, in order to reduce the use of MRI [94].

ORCID: Giorgia Tedesco: <https://orcid.org/0000-0002-2102-1631>; Alessandro Sarno: <https://orcid.org/0000-0002-5207-0495>; Giulio Rizzo: <https://orcid.org/0000-0001-6656-6195>; Annamaria Grecchi: <https://orcid.org/0000-0001-9938-3918>; Ilaria Testa: <https://orcid.org/0000-0002-3137-9602>; Gabriele Giannotti: <https://orcid.org/0000-0002-1147-1866>; Mirko D'Onofrio: <https://orcid.org/0000-0003-3229-9329>

## Author Contributions

Conceptualization: Tedesco G, Sarno A, D'Onofrio M. Data acquisition: Rizzo G, Grecchi A. Data analysis: Testa I, Giannotti G. Drafting the manuscript: Tedesco G, D'Onofrio M. Critical revision: Sarno A, D'Onofrio M.

## Conflict of Interest

No potential conflict of interest relevant to this article was reported.

## References

- Dietrich CF, Averkiou M, Nielsen MB, Barr RG, Burns PN, Calliada F, et al. How to perform contrast-enhanced ultrasound (CEUS). *Ultrasound Int Open* 2018;4:E2-E15.
- Muller-Peltzer K, Rubenthaler J, Reiser M, Clevert DA. Contrast-enhanced ultrasound (CEUS) of the liver: critical evaluation of use in clinical routine diagnostics. *Radiologe* 2017;57:348-355.
- Burrowes DP, Medellin A, Harris AC, Milot L, Wilson SR. Contrast-enhanced US approach to the diagnosis of focal liver masses. *Radiographics* 2017;37:1388-1400.
- Claudon M, Dietrich CF, Choi BI, Cosgrove DO, Kudo M, Nolsoe CP, et al. Guidelines and good clinical practice recommendations for Contrast Enhanced Ultrasound (CEUS) in the liver - update 2012: A WFUMB-EFSUMB initiative in cooperation with representatives of AFSUMB, AIUM, ASUM, FLAUS and ICUS. *Ultrasound Med Biol* 2013;39:187-210.
- Mostbeck G. "Hot topics" in Contrast-Enhanced Ultrasound (CEUS): introduction. *Ultraschall Med* 2012;33 Suppl 1:S1-S2.
- Sidhu PS, Cantisani V, Dietrich CF, Gilja OH, Saftoiu A, Bartels E, et al. The EFSUMB guidelines and recommendations for the clinical practice of contrast-enhanced ultrasound (CEUS) in non-hepatic applications: update 2017 (long version). *Ultraschall Med* 2018;39:e2-e44.
- Claudon M, Dietrich CF, Choi BI, Cosgrove DO, Kudo M, Nolsoe CP, et al. Guidelines and good clinical practice recommendations for contrast enhanced ultrasound (CEUS) in the liver--update 2012: a WFUMB-EFSUMB initiative in cooperation with representatives of AFSUMB, AIUM, ASUM, FLAUS and ICUS. *Ultraschall Med* 2013;34:11-29.
- Sontum PC. Physicochemical characteristics of Sonazoid, a new contrast agent for ultrasound imaging. *Ultrasound Med Biol* 2008;34:824-833.
- Riccabona M. Application of a second-generation US contrast agent in infants and children: a European questionnaire-based survey. *Pediatr Radiol* 2012;42:1471-1480.
- Rosado E, Riccabona M. Off-label use of ultrasound contrast agents for intravenous applications in children: analysis of the existing literature. *J Ultrasound Med* 2016;35:487-496.
- Laugesen NG, Nolsoe CP, Rosenberg J. Clinical applications of contrast-enhanced ultrasound in the pediatric work-up of focal liver lesions and blunt abdominal trauma: a systematic review. *Ultrasound Int Open* 2017;3:E2-E7.
- Harvey CJ, Alsafi A, Kuzmich S, Ngo A, Papadopoulou I, Lakhani A, et al. Role of US contrast agents in the assessment of indeterminate solid and cystic lesions in native and transplant kidneys. *Radiographics* 2015;35:1419-1430.
- Tada S, Yamagishi J, Kobayashi H, Hata Y, Kobari T. The incidence of simple renal cyst by computed tomography. *Clin Radiol* 1983;34:437-439.
- McGuire BB, Fitzpatrick JM. The diagnosis and management of complex renal cysts. *Curr Opin Urol* 2010;20:349-354.
- Nicolau C, Bunesch L, Sebastia C. Renal complex cysts in adults: contrast-enhanced ultrasound. *Abdom Imaging* 2011;36:742-752.
- Oon SF, Foley RW, Quinn D, Quinlan DM, Gibney RG. Contrast-enhanced ultrasound of the kidney: a single-institution experience. *Ir J Med Sci* 2018;187:795-802.
- Kazmierski B, Deurdulian C, Tchelepi H, Grant EG. Applications of contrast-enhanced ultrasound in the kidney. *Abdom Radiol (NY)* 2018;43:880-898.



18. Tamai H, Takiguchi Y, Oka M, Shingaki N, Enomoto S, Shiraki T, et al. Contrast-enhanced ultrasonography in the diagnosis of solid renal tumors. *J Ultrasound Med* 2005;24:1635-1640.
19. Tenant SC, Gutteridge CM. The clinical use of contrast-enhanced ultrasound in the kidney. *Ultrasound* 2016;24:94-103.
20. Lu Q, Huang BJ, Xue LY, Fan PL, Wang WP. Differentiation of renal tumor histotypes: usefulness of quantitative analysis of contrast-enhanced ultrasound. *AJR Am J Roentgenol* 2015;205:W335-W342.
21. Xu ZF, Xu HX, Xie XY, Liu GJ, Zheng YL, Liang JY, et al. Renal cell carcinoma: real-time contrast-enhanced ultrasound findings. *Abdom Imaging* 2010;35:750-756.
22. Jiang J, Chen Y, Zhou Y, Zhang H. Clear cell renal cell carcinoma: contrast-enhanced ultrasound features relation to tumor size. *Eur J Radiol* 2010;73:162-167.
23. Wei SP, Xu CL, Zhang Q, Zhang QR, Zhao YE, Huang PF, et al. Contrast-enhanced ultrasound for differentiating benign from malignant solid small renal masses: comparison with contrast-enhanced CT. *Abdom Radiol (NY)* 2017;42:2135-2145.
24. Choudhary S, Rajesh A, Mayer NJ, Mulcahy KA, Haroon A. Renal oncocytoma: CT features cannot reliably distinguish oncocytoma from other renal neoplasms. *Clin Radiol* 2009;64:517-522.
25. Chang EH, Chong WK, Kasoji SK, Fielding JR, Altun E, Mullin LB, et al. Diagnostic accuracy of contrast-enhanced ultrasound for characterization of kidney lesions in patients with and without chronic kidney disease. *BMC Nephrol* 2017;18:266.
26. Sanz E, Hevia V, Gomez V, Alvarez S, Fabuel JJ, Martinez L, et al. Renal complex cystic masses: usefulness of contrast-enhanced ultrasound (CEUS) in their assessment and its agreement with computed tomography. *Curr Urol Rep* 2016;17:89.
27. Elstob A, Gonsalves M, Patel U. Diagnostic modalities. *Int J Surg* 2016;36:504-512.
28. Bosniak MA. The current radiological approach to renal cysts. *Radiology* 1986;158:1-10.
29. Bosniak MA. Problems in the radiologic diagnosis of renal parenchymal tumors. *Urol Clin North Am* 1993;20:217-230.
30. Hindman NM. Cystic renal masses. *Abdom Radiol (NY)* 2016;41:1020-1034.
31. Bosniak MA. The Bosniak renal cyst classification: 25 years later. *Radiology* 2012;262:781-785.
32. Gulati M, King KG, Gill IS, Pham V, Grant E, Duddalwar VA. Contrast-enhanced ultrasound (CEUS) of cystic and solid renal lesions: a review. *Abdom Imaging* 2015;40:1982-1996.
33. Gabr AH, Gdor Y, Roberts WW, Wolf JS Jr. Radiographic surveillance of minimally and moderately complex renal cysts. *BJU Int* 2009;103:1116-1119.
34. Israel GM, Bosniak MA. Follow-up CT of moderately complex cystic lesions of the kidney (Bosniak category IIF). *AJR Am J Roentgenol* 2003;181:627-633.
35. Robbin ML, Lockhart ME, Barr RG. Renal imaging with ultrasound contrast: current status. *Radiol Clin North Am* 2003;41:963-978.
36. Rubenthaler J, Bogner F, Reiser M, Clevert DA. Contrast-enhanced ultrasound (CEUS) of the kidneys by using the Bosniak classification. *Ultraschall Med* 2016;37:234-251.
37. Zhou L, Tang L, Yang T, Chen W. Comparison of contrast-enhanced ultrasound with MRI in the diagnosis of complex cystic renal masses: a meta-analysis. *Acta Radiol* 2018;59:1254-1263.
38. Nicolau C, Bunesch L, Pano B, Salvador R, Ribal MJ, Mallofre C, et al. Prospective evaluation of CT indeterminate renal masses using US and contrast-enhanced ultrasound. *Abdom Imaging* 2015;40:542-551.
39. Lan D, Qu HC, Li N, Zhu XW, Liu YL, Liu CL. The value of contrast-enhanced ultrasonography and contrast-enhanced CT in the diagnosis of malignant renal cystic lesions: a meta-analysis. *PLoS One* 2016;11:e0155857.
40. Xue LY, Lu Q, Huang BJ, Ma JJ, Yan LX, Wen JX, et al. Contrast-enhanced ultrasonography for evaluation of cystic renal mass: in comparison to contrast-enhanced CT and conventional ultrasound. *Abdom Imaging* 2014;39:1274-1283.
41. Quايا E, Bertolotto M, Cioffi V, Rossi A, Baratella E, Pizzolato R, et al. Comparison of contrast-enhanced sonography with unenhanced sonography and contrast-enhanced CT in the diagnosis of malignancy in complex cystic renal masses. *AJR Am J Roentgenol* 2008;191:1239-1249.
42. Ascenti G, Mazziotti S, Zimbaro G, Settineri N, Magno C, Melloni D, et al. Complex cystic renal masses: characterization with contrast-enhanced US. *Radiology* 2007;243:158-165.
43. Park BK, Kim B, Kim SH, Ko K, Lee HM, Choi HY. Assessment of cystic renal masses based on Bosniak classification: comparison of CT and contrast-enhanced US. *Eur J Radiol* 2007;61:310-314.
44. Graumann O, Osther SS, Karstoft J, Horlyck A, Osther PJ. Bosniak classification system: a prospective comparison of CT, contrast-enhanced US, and MR for categorizing complex renal cystic masses. *Acta Radiol* 2016;57:1409-1417.
45. Clevert DA, Minaifar N, Weckbach S, Jung EM, Stock K, Reiser M, et al. Multislice computed tomography versus contrast-enhanced ultrasound in evaluation of complex cystic renal masses using the Bosniak classification system. *Clin Hemorheol Microcirc* 2008;39:171-178.
46. Caremani M, Occhini U, Caremani A, Tacconi D, Lapini L, Accorsi A, et al. Focal splenic lesions: US findings. *J Ultrasound* 2013;16:65-74.
47. Omar A, Freeman S. Contrast-enhanced ultrasound of the spleen. *Ultrasound* 2016;24:41-49.
48. Cagini L, Gravante S, Malaspina CM, Cesarano E, Giganti M, Rebonato A, et al. Contrast enhanced ultrasound (CEUS) in blunt abdominal trauma. *Crit Ultrasound J* 2013;5 Suppl 1:S9.
49. Manetta R, Pistoia ML, Bultrini C, Stavroulis E, Di Cesare E, Masciocchi C. Ultrasound enhanced with sulphur-hexafluoride-filled

- microbubbles agent (SonoVue) in the follow-up of mild liver and spleen trauma. *Radiol Med* 2009;114:771-779.
50. Sutherland T, Temple F, Galvin A, Hennessy O. Contrast-enhanced ultrasound of the spleen: an introduction and pictorial essay. *Insights Imaging* 2011;2:515-524.
  51. Yu X, Yu J, Liang P, Liu F. Real-time contrast-enhanced ultrasound in diagnosing of focal spleen lesions. *Eur J Radiol* 2012;81:430-436.
  52. Wan YL, Cheung YC, Lui KW, Tseng JH, Lee TY. Ultrasonographic findings and differentiation of benign and malignant focal splenic lesions. *Postgrad Med J* 2000;76:488-493.
  53. Picardi M, Soricelli A, Pane F, Zeppa P, Nicolai E, De Laurentiis M, et al. Contrast-enhanced harmonic compound US of the spleen to increase staging accuracy in patients with Hodgkin lymphoma: a prospective study. *Radiology* 2009;251:574-582.
  54. Catalano O, Aiani L, Barozzi L, Bokor D, De Marchi A, Faletti C, et al. CEUS in abdominal trauma: multi-center study. *Abdom Imaging* 2009;34:225-234.
  55. Blaivas M, Lyon M, Brannam L, Schwartz R, Duggal S. Feasibility of FAST examination performance with ultrasound contrast. *J Emerg Med* 2005;29:307-311.
  56. Thorelius L. Emergency real-time contrast-enhanced ultrasonography for detection of solid organ injuries. *Eur Radiol* 2007;17 Suppl 6:F107-F111.
  57. Cokkinos D, Antypa E, Stefanidis K, Tserotas P, Kostaras V, Parlamenti A, et al. Contrast-enhanced ultrasound for imaging blunt abdominal trauma: indications, description of the technique and imaging review. *Ultraschall Med* 2012;33:60-67.
  58. Sessa B, Trinci M, Ianniello S, Menichini G, Galluzzo M, Miele V. Blunt abdominal trauma: role of contrast-enhanced ultrasound (CEUS) in the detection and staging of abdominal traumatic lesions compared to US and CE-MDCT. *Radiol Med* 2015;120:180-189.
  59. Valentino M, De Luca C, Galloni SS, Branchini M, Modolon C, Pavlica P, et al. Contrast-enhanced US evaluation in patients with blunt abdominal trauma. *J Ultrasound* 2010;13:22-27.
  60. D'Onofrio M, Martone E, Faccioli N, Zamboni G, Malago R, Mucelli RP. Focal liver lesions: sinusoidal phase of CEUS. *Abdom Imaging* 2006;31:529-536.
  61. D'Onofrio M, Rozzanigo U, Masinielli BM, Caffarri S, Zogno A, Malago R, et al. Hypoechoic focal liver lesions: characterization with contrast enhanced ultrasonography. *J Clin Ultrasound* 2005;33:164-172.
  62. D'Onofrio M, Gallotti A, Pozzi Mucelli R. Imaging techniques in pancreatic tumors. *Expert Rev Med Devices* 2010;7:257-273.
  63. Schima W, Ba-Ssalamah A, Kolblinger C, Kulinna-Cosentini C, Puespoek A, Gotzinger P. Pancreatic adenocarcinoma. *Eur Radiol* 2007;17:638-649.
  64. D'Onofrio M, Gallotti A, Principe F, Mucelli RP. Contrast-enhanced ultrasound of the pancreas. *World J Radiol* 2010;2:97-102.
  65. Kitano M, Kudo M, Maekawa K, Suetomi Y, Sakamoto H, Fukuta N, et al. Dynamic imaging of pancreatic diseases by contrast enhanced coded phase inversion harmonic ultrasonography. *Gut* 2004;53:854-859.
  66. D'Onofrio M, Zamboni G, Tognolini A, Malago R, Faccioli N, Frulloni L, et al. Mass-forming pancreatitis: value of contrast-enhanced ultrasonography. *World J Gastroenterol* 2006;12:4181-4184.
  67. Nagase M, Furuse J, Ishii H, Yoshino M. Evaluation of contrast enhancement patterns in pancreatic tumors by coded harmonic sonographic imaging with a microbubble contrast agent. *J Ultrasound Med* 2003;22:789-795.
  68. Hocke M, Schulze E, Gottschalk P, Topalidis T, Dietrich CF. Contrast-enhanced endoscopic ultrasound in discrimination between focal pancreatitis and pancreatic cancer. *World J Gastroenterol* 2006;12:246-250.
  69. Oshikawa O, Tanaka S, Ioka T, Nakaizumi A, Hamada Y, Mitani T. Dynamic sonography of pancreatic tumors: comparison with dynamic CT. *AJR Am J Roentgenol* 2002;178:1133-1137.
  70. D'Onofrio M, Barbi E, Dietrich CF, Kitano M, Numata K, Sofuni A, et al. Pancreatic multicenter ultrasound study (PAMUS). *Eur J Radiol* 2012;81:630-638.
  71. Dietrich CF, Braden B, Hocke M, Ott M, Ignee A. Improved characterisation of solitary solid pancreatic tumours using contrast enhanced transabdominal ultrasound. *J Cancer Res Clin Oncol* 2008;134:635-643.
  72. Serra C, Felicani C, Mazzotta E, Piscitelli L, Cipollini ML, Tomassetti P, et al. Contrast-enhanced ultrasound in the differential diagnosis of exocrine versus neuroendocrine pancreatic tumors. *Pancreas* 2013;42:871-877.
  73. D'Onofrio M, Biagioli E, Gerardi C, Canestrini S, Rulli E, Crosara S, et al. Diagnostic performance of contrast-enhanced ultrasound (CEUS) and contrast-enhanced endoscopic ultrasound (ECEUS) for the differentiation of pancreatic lesions: a systematic review and meta-analysis. *Ultraschall Med* 2014;35:515-521.
  74. Falconi M, Bartsch DK, Eriksson B, Kloppel G, Lopes JM, O'Connor JM, et al. ENETS Consensus Guidelines for the management of patients with digestive neuroendocrine neoplasms of the digestive system: well-differentiated pancreatic non-functioning tumors. *Neuroendocrinology* 2012;95:120-134.
  75. Sahani DV, Kadavigere R, Saokar A, Fernandez-del Castillo C, Brugge WR, Hahn PF. Cystic pancreatic lesions: a simple imaging-based classification system for guiding management. *Radiographics* 2005;25:1471-1484.
  76. D'Onofrio M, Zamboni G, Faccioli N, Capelli P, Pozzi Mucelli R. Ultrasonography of the pancreas. 4. Contrast-enhanced imaging. *Abdom Imaging* 2007;32:171-181.
  77. Kim YH, Saini S, Sahani D, Hahn PF, Mueller PR, Auh YH. Imaging diagnosis of cystic pancreatic lesions: pseudocyst versus nonpseudocyst. *Radiographics* 2005;25:671-685.
  78. Adsay NV. Cystic neoplasia of the pancreas: pathology and biology.

- J Gastrointest Surg 2008;12:401-404.
79. Buetow PC, Rao P, Thompson LD. From the Archives of the AFIP. Mucinous cystic neoplasms of the pancreas: radiologic-pathologic correlation. *Radiographics* 1998;18:433-449.
  80. Rickes S, Wermke W. Differentiation of cystic pancreatic neoplasms and pseudocysts by conventional and echo-enhanced ultrasound. *J Gastroenterol Hepatol* 2004;19:761-766.
  81. D'Onofrio M, Canestrini S, De Robertis R, Crosara S, Demozzi E, Ciaravino V, et al. CEUS of the pancreas: Still research or the standard of care. *Eur J Radiol* 2015;84:1644-1649.
  82. Fan Z, Yan K, Wang Y, Qiu J, Wu W, Yang L, et al. Application of contrast-enhanced ultrasound in cystic pancreatic lesions using a simplified classification diagnostic criterion. *Biomed Res Int* 2015;2015:974621.
  83. D'Onofrio M, Megibow AJ, Faccioli N, Malago R, Capelli P, Falconi M, et al. Comparison of contrast-enhanced sonography and MRI in displaying anatomic features of cystic pancreatic masses. *AJR Am J Roentgenol* 2007;189:1435-1442.
  84. Itoh T, Hirooka Y, Itoh A, Hashimoto S, Kawashima H, Hara K, et al. Usefulness of contrast-enhanced transabdominal ultrasonography in the diagnosis of intraductal papillary mucinous tumors of the pancreas. *Am J Gastroenterol* 2005;100:144-152.
  85. Procacci C, Biasiutti C, Carbognin G, Accordini S, Bicego E, Guarise A, et al. Characterization of cystic tumors of the pancreas: CT accuracy. *J Comput Assist Tomogr* 1999;23:906-912.
  86. Sahani DV, Miller JC, del Castillo CF, Brugge WR, Thrall JH, Lee SI. Cystic pancreatic lesions: classification and management. *J Am Coll Radiol* 2009;6:376-380.
  87. Braden B, Jenssen C, D'Onofrio M, Hocke M, Will U, Moller K, et al. B-mode and contrast-enhancement characteristics of small nonincidental neuroendocrine pancreatic tumors. *Endosc Ultrasound* 2017;6:49-54.
  88. Dietrich CF, Sahai AV, D'Onofrio M, Will U, Arcidiacono PG, Petrone MC, et al. Differential diagnosis of small solid pancreatic lesions. *Gastrointest Endosc* 2016;84:933-940.
  89. Ripolles T, Martinez MJ, Lopez E, Castello I, Delgado F. Contrast-enhanced ultrasound in the staging of acute pancreatitis. *Eur Radiol* 2010;20:2518-2523.
  90. Shimosegawa T, Chari ST, Frulloni L, Kamisawa T, Kawa S, Mino-Kenudson M, et al. International consensus diagnostic criteria for autoimmune pancreatitis: guidelines of the International Association of Pancreatology. *Pancreas* 2011;40:352-358.
  91. Dong Y, D'Onofrio M, Hocke M, Jenssen C, Potthoff A, Atkinson N, et al. Autoimmune pancreatitis: imaging features. *Endosc Ultrasound* 2018;7:196-203.
  92. Sidhu PS, Brabrand K, Cantisani V, Correas JM, Cui XW, D'Onofrio M, et al. EFSUMB guidelines on Interventional Ultrasound (INVUS), Part II. Diagnostic ultrasound-guided interventional procedures (long version). *Ultraschall Med* 2015;36:E15-E35.
  93. Tawada K, Yamaguchi T, Kobayashi A, Ishihara T, Sudo K, Nakamura K, et al. Changes in tumor vascularity depicted by contrast-enhanced ultrasonography as a predictor of chemotherapeutic effect in patients with unresectable pancreatic cancer. *Pancreas* 2009;38:30-35.
  94. Italian Association of Hospital Gastroenterologists and Endoscopists; Italian Association for the Study of the Pancreas, Buscarini E, Pezzilli R, Cannizzaro R, De Angelis C, et al. Italian consensus guidelines for the diagnostic work-up and follow-up of cystic pancreatic neoplasms. *Dig Liver Dis* 2014;46:479-493.